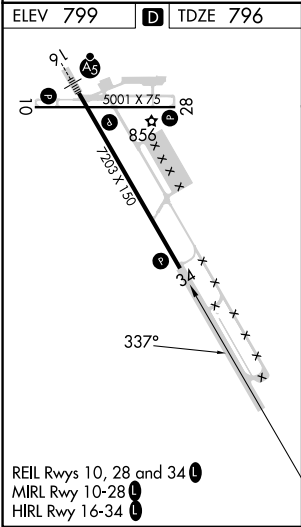
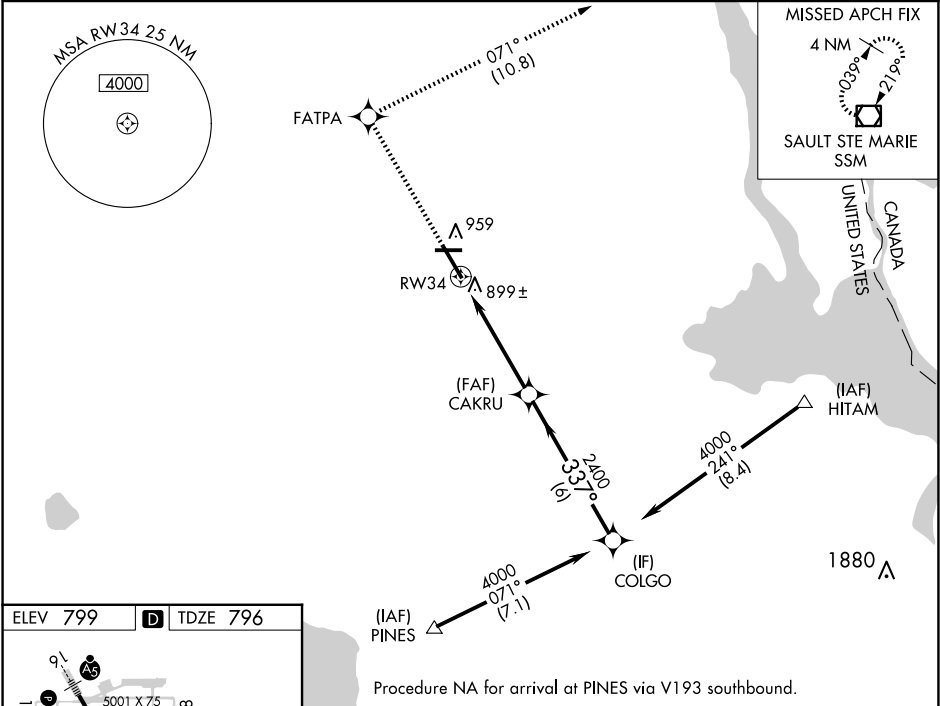


| | | | |
|--|------------------------|-----------------------------|---|
| WAAS CH 56315 W34A | APP CRS 337° | Rwy Idg TDZE Apt Elev | 7203 796 799 |
|--|------------------------|-----------------------------|---|

RNAV (GPS) RWY 34

CHIPPEWA COUNTY INTL (CIU)

| | | |
|---|---------------------------------------|--|
| RNP APCH. ▼ For uncompensated Baro-VNAV systems, LNAV/VNAV NA below -16°C or above 54°C. ▲ When local altimeter setting not received, use Sault Ste Marie Muni/Sanderson Fld altimeter setting; increase LPV DA to 1091 feet, LNAV/VNAV DA to 1243 feet and all MDA 60 feet; increase LNAV Cat D visibility ¼ SM. Baro-VNAV and VDP NA when using Sault Ste Marie Muni/Sanderson Fld altimeter setting. | | MISSED APPROACH: Climb to 3000 direct FATPA and track 071° to SSM VOR/DME and hold. |
| AWOS-3PT 127.575 | TORONTO CENTER 132.65 344.5 | UNICOM 123.0 (CTAF) 0 |



| | | | | | | | |
|-----------------|---------|-------------|--------------|--------------|-----------------|-------------|-------------|
| COLGO | | | | 3000 | FATPA | tr 071° | SSM |
| 4000 | | | | 2400 | *1.2 NM to RW34 | | *LNAV only. |
| GP 3.00° TCH 40 | | | | 2400 | RW34 | | |
| | | | | 6 NM | 3.7 NM | 1.2 NM | |
| CATEGORY | A | B | C | D | | | |
| LPV DA | 1046-1 | | 250 (300-1) | | | | |
| LNAV/DA VNAV | 1198-1½ | | 402 (400-1½) | | | | |
| LNAV MDA | 1200-1 | 404 (500-1) | 1200-1¼ | 404 (500-1¼) | | | |
| CIRCLING | 1260-1 | 461 (500-1) | 1260-1½ | 1360-2 | 461 (500-1½) | 561 (600-2) | |

EC-1, 10 JUL 2025 to 07 AUG 2025

EC-1, 10 JUL 2025 to 07 AUG 2025