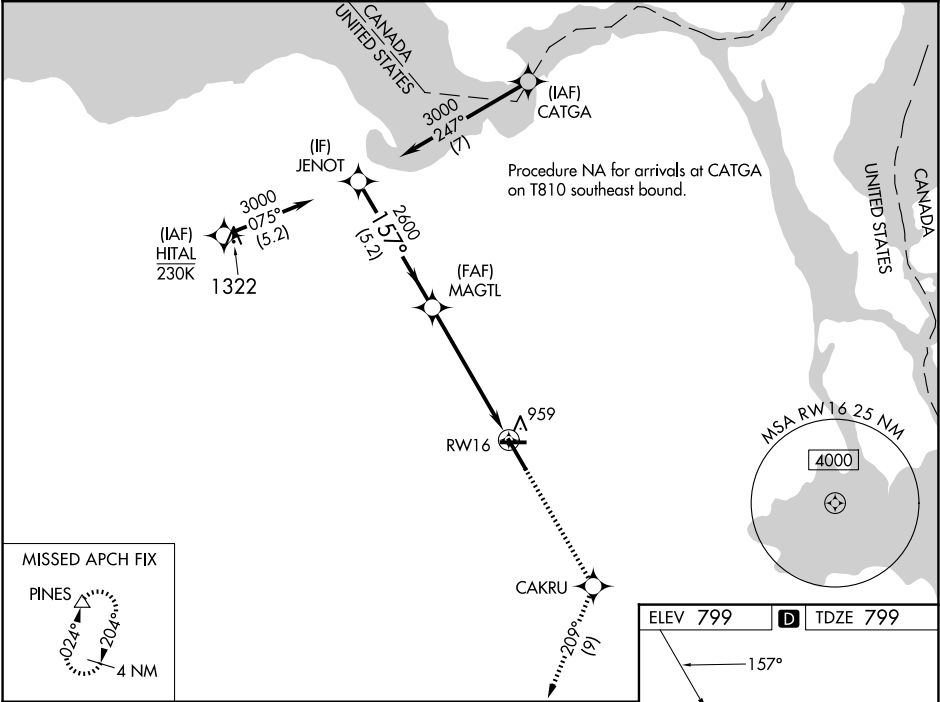


WAAS CH <b>69215</b> <b>W16A</b>	APP CRS <b>157°</b>	Rwy Idg TDZE Apt Elev <b>7203</b> <b>799</b> <b>799</b>
--	------------------------	--

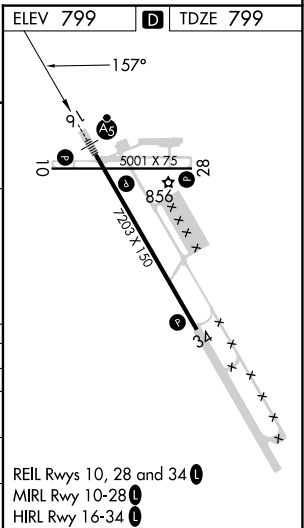
RNAV (GPS) RWY 16

CHIPPEWA COUNTY INTL (CIU)

RNP APCH - GPS.		<div>MALSR</div> <div><div><div></div><div>A5</div></div><div><div></div><div></div></div></div>	MISSED APPROACH: Climb to 3000 direct CAKRU and on track 209° to PINES and hold.
<div><div><div><div></div><div></div></div><div>For uncompensated Baro-VNAV systems, LNAV/VNAV NA below -16°C or above 54°C.</div><div></div><div>For inop ALS, increase LNAV/VNAV all Cats visibility to 1 SM.</div></div></div>			
AWOS-3PT 127.575	TORONTO CENTER 132.65 344.5	UNICOM 123.0 (CTAF) 0	



JENOT		MAGTL	CAKRU	tr 209°	PINES
3000		2600	1.1 NM to RW16	RW16	
GP 3.00° TCH 58		5.2 NM	4.3 NM	1.1	
CATEGORY	A	B	C	D	
LPV DA	999-1/2		200 (200-1/2)		
LNAV/VNAV DA	1140-5/8		341 (400-5/8)		
LNAV MDA	1220-1/2 421 (500-1/2)		1220-3/4 421 (500-3/4)		
CIRCLING	1260-1 461 (500-1)		1260-1 1/2 461 (500-1 1/2)		1360-2 561 (600-2)



EC-1, 10 JUL 2025 to 07 AUG 2025

EC-1, 10 JUL 2025 to 07 AUG 2025