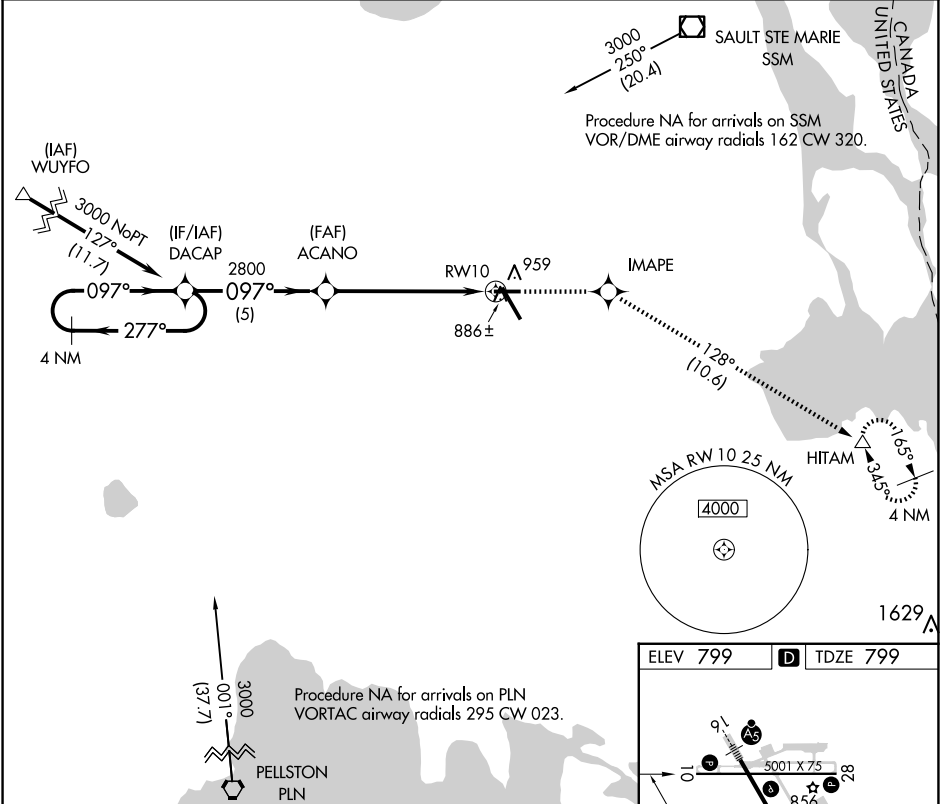


APP CRS	Rwy Idg	5000
097°	TDZE	799
	Apt Elev	799

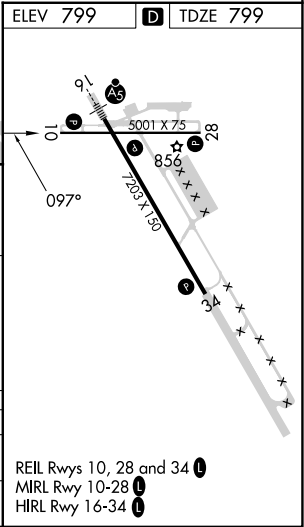
RNAV (GPS) RWY 10
CHIPPEWA COUNTY INTL (CIU)

RNP APCH.	MISSED APPROACH: Climb to 2900 direct IMAPE and track 128° to HITAM and hold.
VDP NA with Sault Ste Marie altimeter setting. When local altimeter setting not received, use Sault Ste Marie Muni/Sanderson Fld altimeter setting; increase all MDA 60 feet, increase LNAV visibility Cat C/D and Circling Cat C ¼ SM.	

AWOS-3PT 127.575	TORONTO CENTER 132.65 344.5	UNICOM 123.0 (CTAF) 0
---------------------	--------------------------------	--------------------------



4 NM Holding Pattern	DACAP	2900	IMAPE	tr 128°	HITAM
3000	2800	ACANO	1.5 NM to RW10	RW10	
277°	097°	3.05°	TCH 40	1.5	
5 NM	4.5 NM				
CATEGORY	A	B	C	D	
LNAV MDA	1320-1	521 (600-1)	1320-1½	521 (600-1½)	
CIRCLING	1320-1	521 (600-1)	1320-1½	1360 - 2	
			521 (600-1½)	561 (600-2)	



EC-1, 10 JUL 2025 to 07 AUG 2025

EC-1, 10 JUL 2025 to 07 AUG 2025