

LOM CI	APP CRS	Rwy Ldg
400	337°	7203
	TDZE	796
	Apt Elev	799

NDB RWY 34

CHIPPEWA COUNTY INTL (CIU)

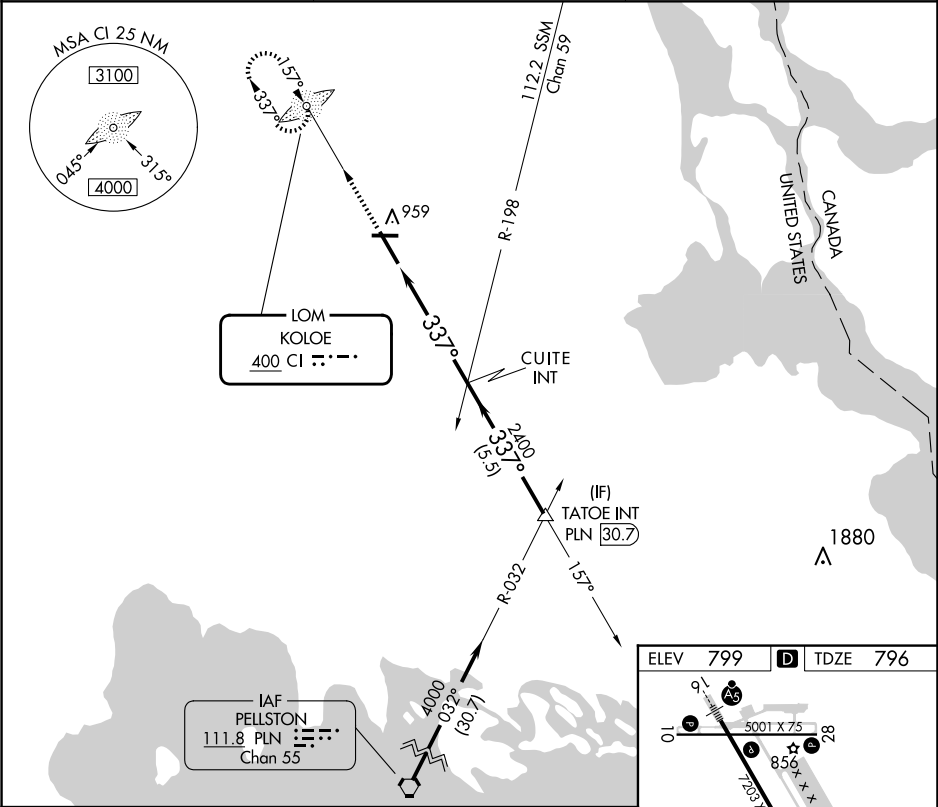
▼

NA

When local altimeter setting not received, use Sault-Ste Marie Muni/
Sanderson Fld altimeter setting and increase all MDA 60 feet and
increase S-34 Cat C/D visibility to 1 3/8 .

MISSED APPROACH: Climb to 2600 direct
KOLOE LOM and hold.

AWOS-3PT	TORONTO CENTER	UNICOM
127.575	132.65 344.5	123.0 (CTAF) 0



2600

↑

C1

CUITE INT

337°

4000

2400

2.95°

TCH 40

5.5 NM

TATOE INT

337°

34

REIL Rws 10, 28 and 34

MIRL Rwy 10-28

HIRL Rwy 16-34

FAF to MAP 5 NM

Knots

60

90

120

150

180

Min:Sec

5:00

3:20

2:30

2:00

1:40

CATEGORY	A	B	C	D
S-34	1220-1 424 (500-1)	1220-1 424 (500-1 1/4)		
CIRCLING	1260-1 461 (500-1)	1260-1 461 (500-1 1/2)	1360-2 561 (600-2)	