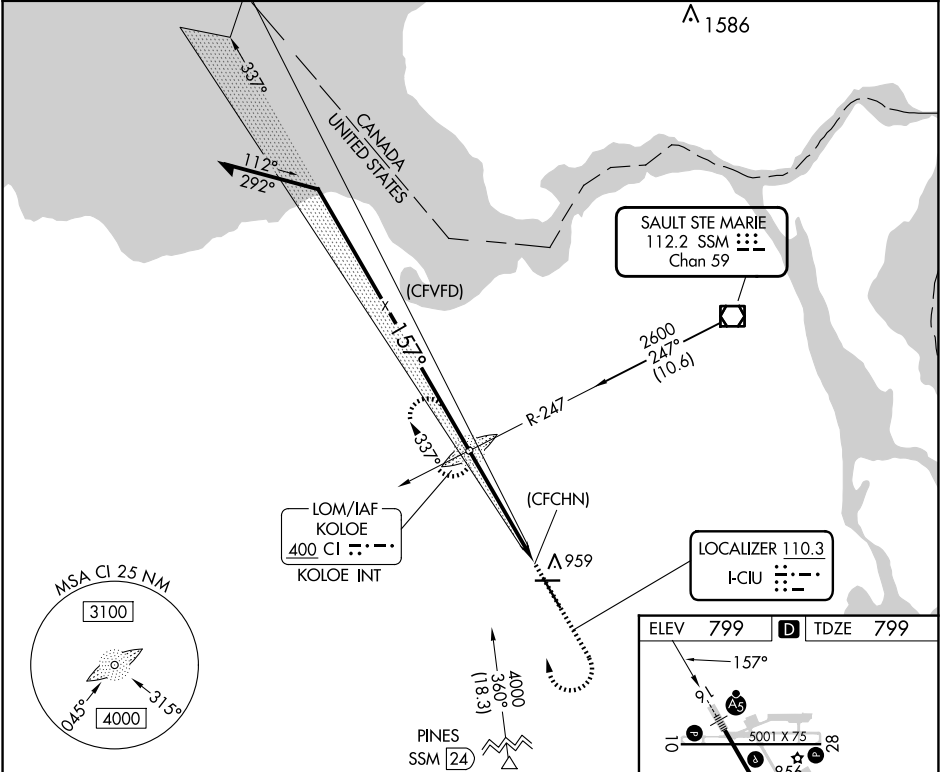


LOC I-CIU 110.3	APP CRS 157°	Rwy Ldg TDZE Apt Elev	7203 799 799
---------------------------	------------------------	-----------------------------	---

ILS or LOC RWY 16
CHIPPEWA COUNTY INTL (CIU)

ADF required.	MALSR A5	MISSED APPROACH: Climb to 1500 then climbing right turn to 2600 direct KOLOE LOM/INT and hold, continue climb-in-hold to 2600.
Autopilot coupled approach NA below 1380. For inop ALS, increase S-ILS 16 visibility to ¾ SM all Cats and S-LOC 16 Cat C/D/E to 1 SM.		

AWOS-3PT 127.575	TORONTO CENTER 132.65 344.5	UNICOM 123.0 (CTAF) 0
----------------------------	---------------------------------------	---------------------------------



Remain within 1.5 NM	GS 3.00° TCH 58	2600	157°	2600	2563	KOLOE LOM/INT
LOC unusable from 0.6 NM inbound. Glideslope unusable below 1090 feet.						
CATEGORY	A	B	C	D	E	
S-ILS 16	1090-½ 291 (300-½)					
S-LOC 16	1160-½	361 (400-½)	1160-5/8	361 (400-5/8)		
CIRCLING	1260-1	461 (500-1)	1260-1½	1360-2	1380-2	
			461 (500-1½)	561 (600-2)	581 (600-2)	

ELEV 799	TDZE 799
REIL Rwys 10, 28 and 34	
MIRL Rwy 10-28	
HIRL Rwy 16-34	
FAF to MAP 4.7 NM	
Knots	60 90 120 150 180
Min:Sec	4:42 3:08 2:21 1:53 1:34

EC-1, 10 JUL 2025 to 07 AUG 2025

EC-1, 10 JUL 2025 to 07 AUG 2025