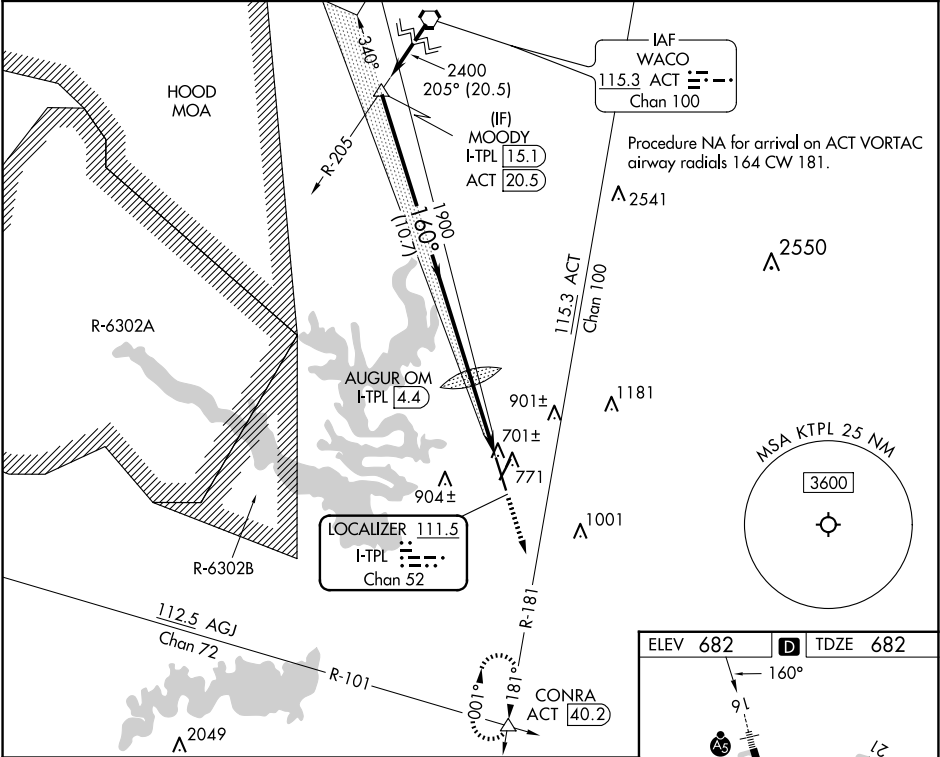


LOC/DME I-TPL <b>111.5</b> Chan <b>52</b>	APP CRS <b>160°</b>	Rwy Idg TDZE <b>682</b> Apt Elev <b>682</b>
---	------------------------	---

ILS or LOC RWY 16  
DRAUGHON-MILLER CENTRAL TEXAS RGNL (TPL)

<div><div>▼</div><div>▲ NA</div></div> Autopilot coupled approach NA below 990. For inop ALS, increase S-LOC 16 Cats C/D visibility to 1 SM.	<div><div>MALSR</div><div></div></div>	MISSED APPROACH: Climb to 1100 then continue climb to 3600 on heading 160° and on ACT VORTAC R-181 to CONRA INT/ACT 40.2 DME and hold, continue climb-in-hold to 3600.
--	--	---

AWOS-3PT <b>134.975</b>	GRAY APP CON <b>120.075 370.0</b>	CINC DEL <b>125.9</b>	UNICOM <b>123.0</b> (CTAF) <b>0</b>
----------------------------	--------------------------------------	--------------------------	--



CATEGORY	A	B	C	D
S-ILS 16	882-1/2	200 (200-1/2)		
S-LOC 16	980-1/2	298 (300-1/2)		
CIRCLING	1120-1 438 (500-1)	1180-1 498 (500-1)	1280-1 1/2 598 (600-1 1/2)	1420-2 1/4 738 (800-2 1/4)

MOODY I-TPL 15.1 ACT 20.5

AUGUR OM I-TPL 4.4

1100

3600

hdg 160°

CONRA

△

2400

160°

1900

1673

I-TPL 2

I-TPL 1.3

GS 2.90° TCH 60

10.7 NM

2.4 NM

0.6 NM

