

VORTAC GGG	APP CRS	Rwy Idg	9200
112.9	125°	TDZE	358
Chan 76		Apt Elev	366

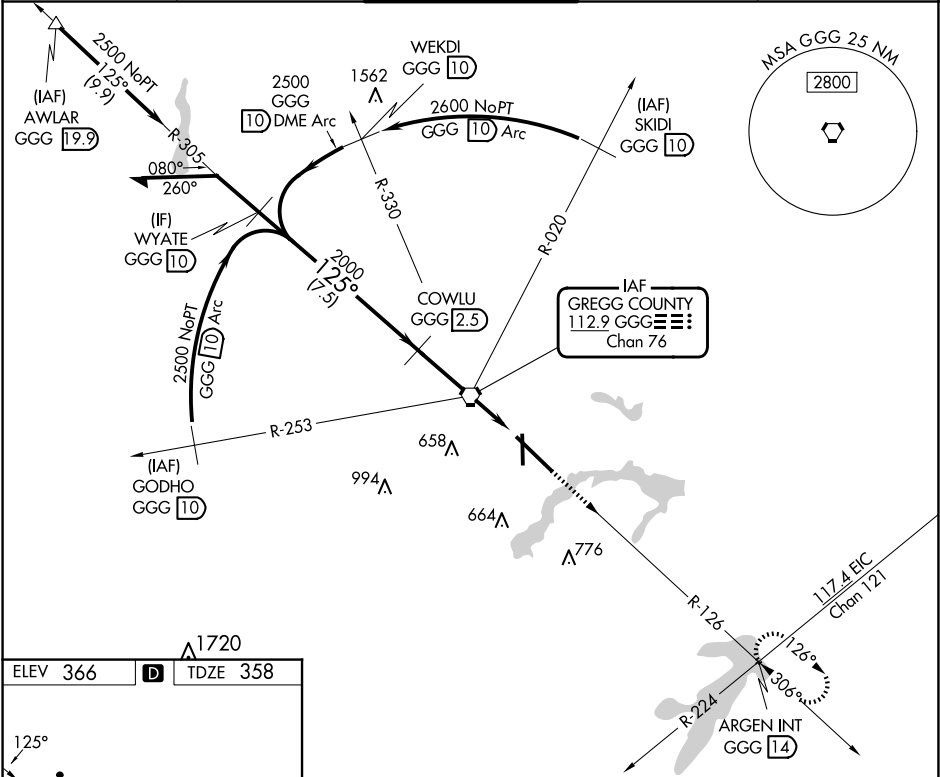
VOR/DME or TACAN RWY 13
EAST TEXAS RGNL (GGG)

⚠ For inop ALS, increase S-13 Cat C/D/E visibility to 1½ SM. When local altimeter setting not received use Gilmer altimeter setting and increase all MDA 60 feet, S-13 and Circling Cats C/D/E visibility ¼ SM. VDP NA when using Gilmer altimeter setting. For inop ALS when using Gilmer altimeter setting increase S-13 Cat C/D/E visibility to 1½ SM.

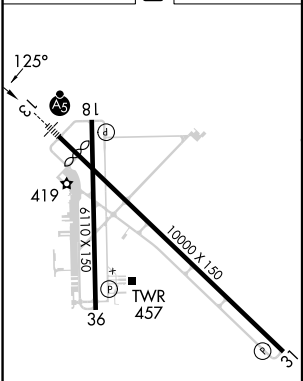
MALSR
A5

MISSED APPROACH:
Climb to 3000 via GGG
R-126 to ARGEN Int/GGG
14 DME and hold.

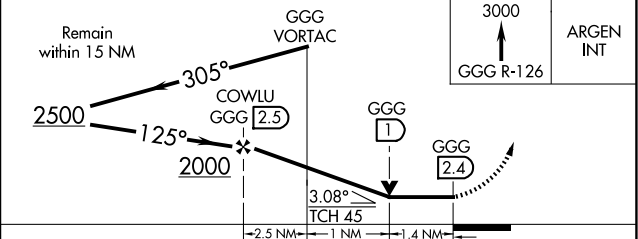
ATIS	LONGVIEW APP CON*	EASTEX TOWER*	GND CON	UNICOM
119.65	124.675 257.975	119.2(CTAF) 377.05	121.6	122.95



ELEV 366	D	TDZE 358
----------	---	----------



HIRL Rwy 13-31	1
MIRL Rwy 18-36	1



CATEGORY	A	B	C	D	E
S-13	860/24 502 (500-½)		860/55 502 (500-1)		860/55 502 (500-1)
CIRCLING	860-1 494 (500-1)		980-1¼ 614 (700-1¼)	1080-2¼ 714 (600-2¼)	1080-2½ 714 (800-2½)

SC-2, 10 JUL 2025 to 07 AUG 2025

SC-2, 10 JUL 2025 to 07 AUG 2025