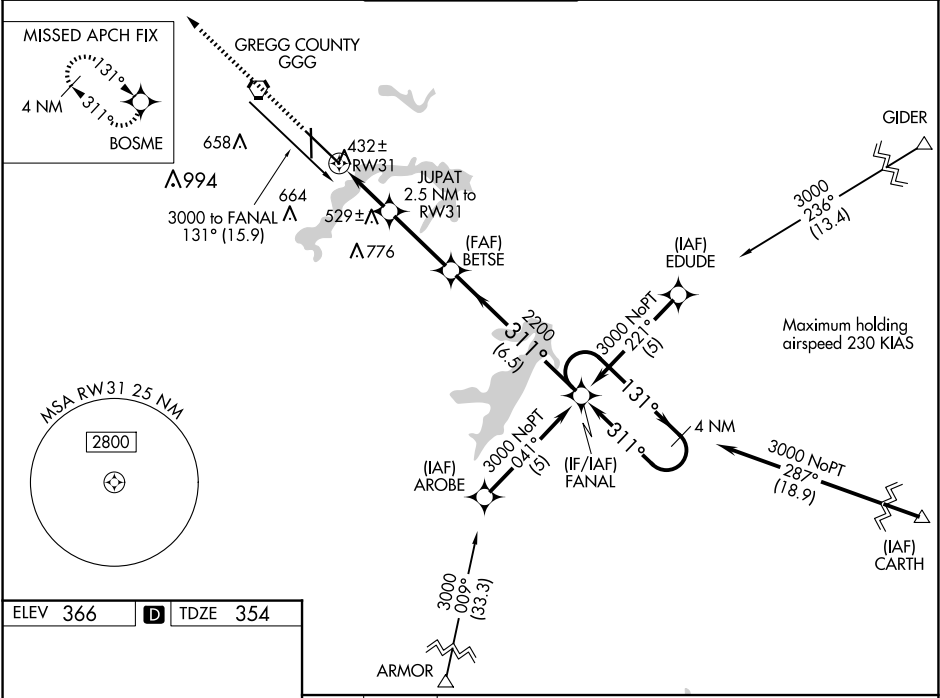


WAAS CH 53504 W31A	APP CRS 311°	Rwy Idg 9200 TDZE 354 Apt Elev 366
--	------------------------	---

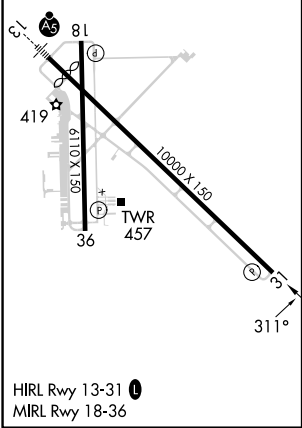
RNAV (GPS) RWY 31

EAST TEXAS RGNL (GGG)

RNP APCH - GPS		MISSED APPROACH: Climb to 2600 direct BOSME and hold.		
Baro-VNAV and VDP NA when using Gilmer altimeter setting. For uncompensated Baro-VNAV systems, LNAV/VNAV NA below -15°C or above 54°C. When local altimeter setting not received, use Gilmer altimeter setting and increase all DA 59 feet, all MDA 60 feet. Increase LPV visibility all Cats ¼ SM and Circling visibility Cats C/D/E ¼ SM.				
ATIS 119.65	LONGVIEW APP CON★ 124.675 257.975	EASTEX TOWER★ 119.2(CTAF) 0377.05	GND CON 121.6	UNICOM 122.95



ELEV 366	D	TDZE 354
----------	---	----------



2600 BOSME		JUPAT 2.5 NM to RW31	BETSE	FANAL	4 NM Holding Pattern
1.2 NM to RW31		1200	2200	311°	3000
1.2		1.3	3.1 NM	6.5 NM	
CATEGORY	A	B	C	D	E
LPV DA	604-3/4 250 (300-3/4)				
LNAV/VNAV DA	682-1 328 (400-1 1/4)				
LNAV MDA	800-1	446 (500-1)	800-1 3/8 446 (500-1 3/8)	800-1 1/2 446 (500-1 1/2)	
CIRCLING	860-1	494 (500-1)	980-1 3/4 614 (700-1 3/4)	1080-2 1/4 714 (800-2 1/4)	1080-2 1/2 714 (800-2 1/2)

SC-2, 10 JUL 2025 to 07 AUG 2025

SC-2, 10 JUL 2025 to 07 AUG 2025