

WAAS CH <b>99426</b> <b>W18A</b>	APP CRS <b>176°</b>	Rwy Idg TDZE <b>356</b> Apt Elev <b>366</b>
--	------------------------	---

RNAV (GPS) RWY 18

EAST TEXAS RGNL (GGG)

RNP APCH - GPS

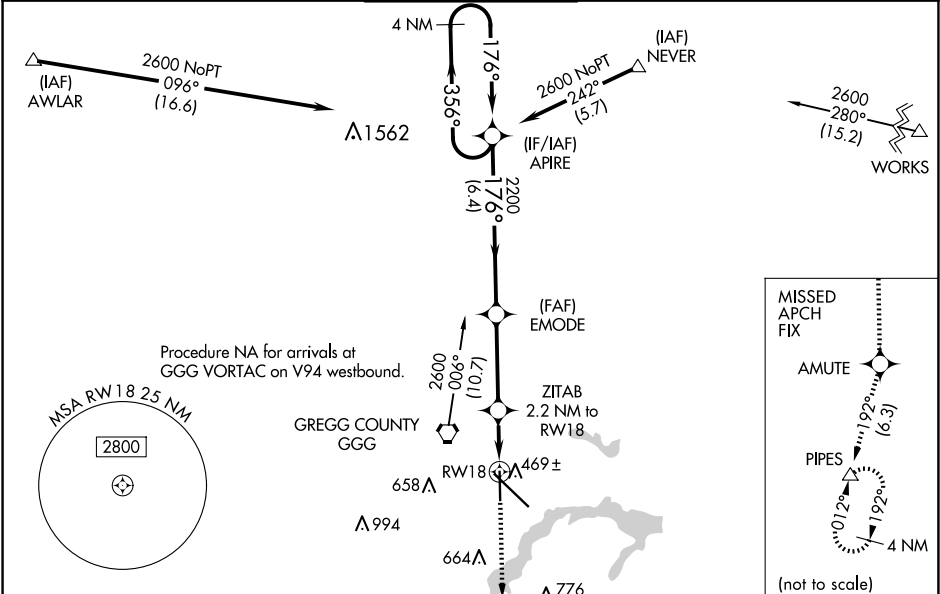
▼

▲

Baro-VNAV and VDP NA when using Gilmer altimeter setting. For uncompensated Baro-VNAV systems, LNAV/VNAV NA below -15°C or above 54°C. Rwy 18 helicopter visibility reduction below ¼ SM NA. When local altimeter setting not received, use Gilmer altimeter setting and increase LPV DA to 689 feet, LNAV/VNAV DA to 711 feet and all MDA 60 feet; increase LPV visibility all Cats ½ SM and LNAV and Circling visibility Cats C/D ¼ SM.

MISSED APPROACH:  
Climb to 2400 direct  
AMUTE and on track  
192° to PIPES and hold.

ATIS <b>119.65</b>	LONGVIEW APP CON★ <b>124.675 257.975</b>	EASTEX TOWER★ <b>119.2 (CTAF) 0377.05</b>	GND CON <b>121.6</b>	UNICOM <b>122.95</b>
-----------------------	---	--	-------------------------	-------------------------



ELEV 366

D

TDZE 356

VGSI and RNAV glidepath not coincident (VGSI Angle 3.00/TCH 59).

4 NM Holding Pattern

2600

176°

356°

GP 3.00° TCH 53

APIRE

EMODE

ZITAB 2.2 NM to RWY 18

1 NM to RWY 18

1100

2200

6.4 NM

3.4 NM

1.2 NM

1.0

2400

AMUTE

PIPES

176°

356°

176°

2200

1100

6.4 NM

3.4 NM

1.2 NM

1.0

CATEGORY	A	B	C	D
LPV DA	630-7/8 274 (300-7/8)			
LNAV/VNAV DA	652-1 296 (300-1)			
LNAV MDA	720-1 364 (400-1)			
CIRCLING	860-1 494 (500-1)		980-1 714 (800-2 1/4)	