

LOC I-SLK <b><u>108.9</u></b>	APP CRS <b>229°</b>	Rwy Idg TDZE Apt Elev	<b>6333</b> <b>1663</b> <b>1663</b>
----------------------------------	------------------------	-----------------------------	---

ILS or LOC RWY 23  
ADIRONDACK RGNL (SLK)

DME required.  
RNAV 1-GPS required.

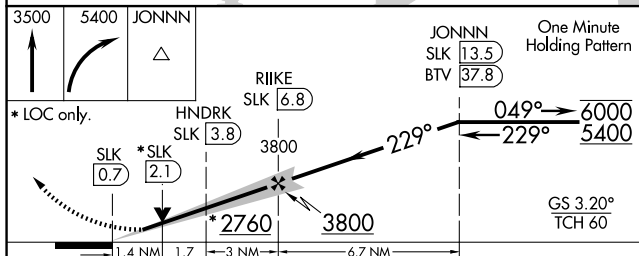
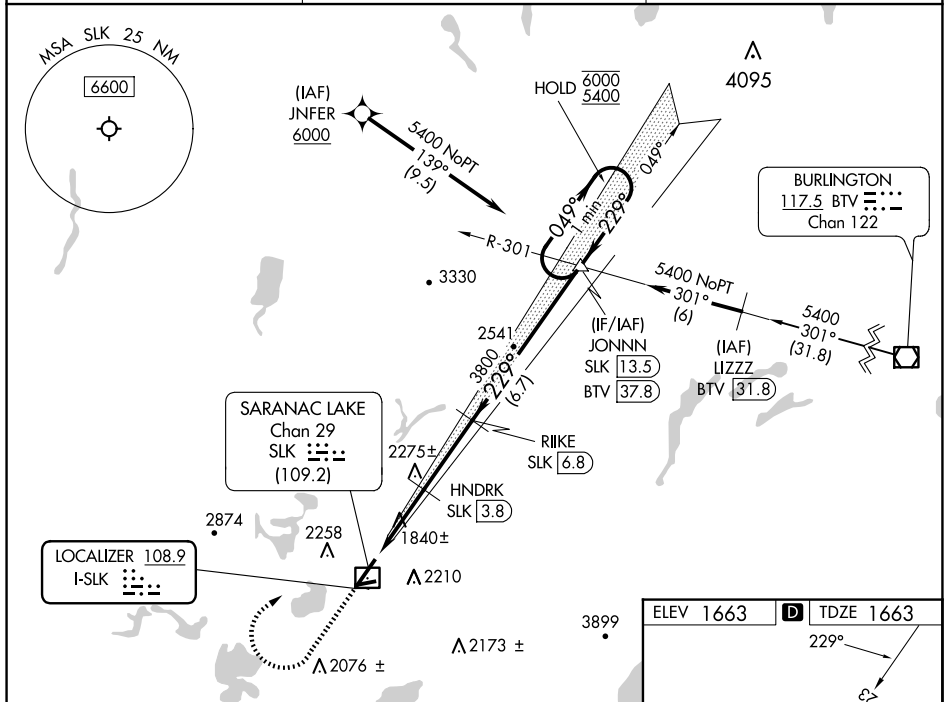
**T** Circling Rwy 5, 9, 27 NA at night. DME from SLK DME. Simultaneous  
**A** reception of I-SLK and SLK DME required. LOC only Rwy 23 helicopter  
**❄** -29°C visibility reduction below  $\frac{3}{4}$  SM NA. For inop ALS, increase S-LOC  
 23 Cat A/B visibility to 1 SM.


MALSR

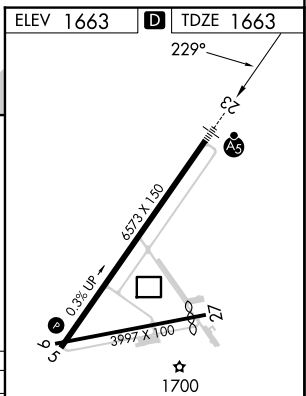


**MISSED APPROACH:** Climb to 3500 then climbing right turn to 5400 direct JONNN and hold.

ASOS <b>124.175</b>	BOSTON CENTER <b>120.35 342.25</b>	UNICOM <b>123.0 (CTAF) 0</b>
------------------------	---------------------------------------	---------------------------------



CATEGORY	A	B	C	D
S-ILS 23	1863- $\frac{1}{2}$		200 (200- $\frac{1}{2}$ )	
S-LOC 23	2200- $\frac{3}{4}$	537 (600- $\frac{3}{4}$ )	2200-1	537 (600-1)
 CIRCULING	2500-1 $\frac{1}{4}$ 837 (900-1 $\frac{1}{4}$ )	2660-1 $\frac{1}{2}$ 997 (1000-1 $\frac{1}{2}$ )	2660-3 997 (1000-3)	2700-3 1037 (1100-3)



SARANAC LAKE, NEW YORK  
Amdt 11 17JUN21

44°23'N-74°12'W

ADIRONDACK RGNL (SLK)  
ILS or LOC RWY 23

NE-2, 10 JUL 2025 to 07 AUG 2025

NE-2, 10 JUL 2025 to 07 AUG 2025