

WAAS CH 82207 W33A	APP CRS 335°	Rwy Ldg TDZE Apt Elev	8301 143 143
--	------------------------	-----------------------------	---

RNAV (GPS) Y RWY 33L

BALTIMORE/WASHINGTON INTL THURGOOD MARSHALL (BWI)

RNP APCH-GPS.

T For uncompensated Baro-VNAV systems, LNAV/VNAV NA below -11°C
A or above 54°C.

MALSR



MISSED APPROACH: Climb to 3000 direct BMORE and hold.

D-ATIS	POTOMAC APP CON				BALTIMORE TOWER	GND CON	CLNC DEL
115.1 127.8	119.0 282.275	(020°-100°)	119.7 290.475	(131°-180°)	119.4 257.8	121.9	118.05
	124.55 317.425	(101°-130°)	128.7 307.9	(181°-019°)			

CPDLC

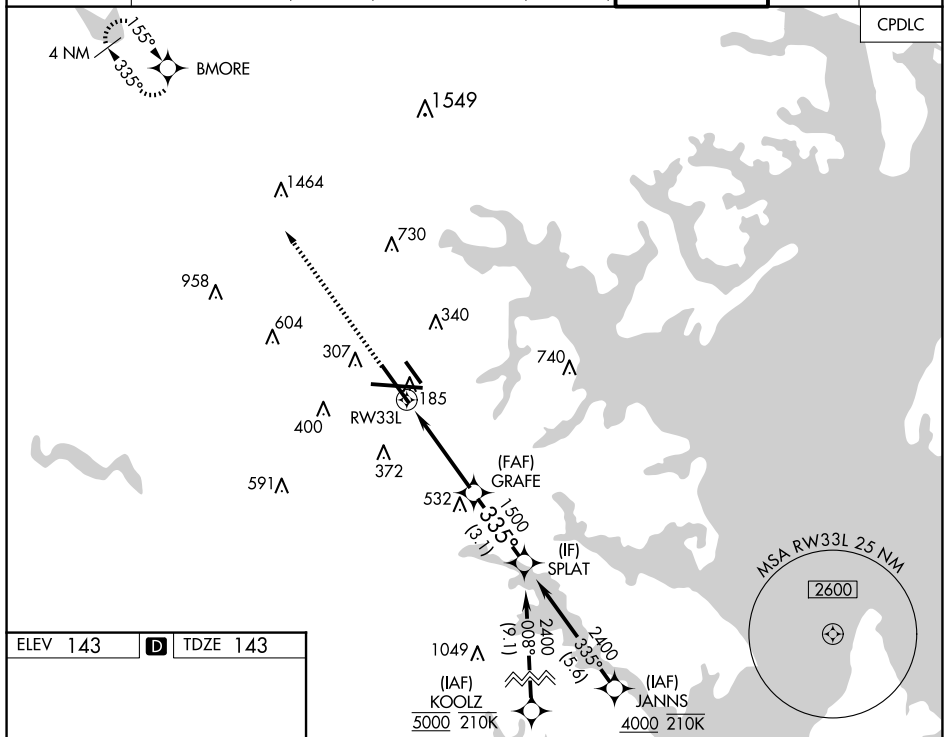


Diagram illustrating the RW33L approach procedure. The approach is a 335° glidepath. Key features include:

- 1.2 NM to RW33L
- 2.9 NM to GRAFE
- 3.1 NM to SPLAT
- 335° heading
- 335° heading
- 335° heading
- TDZ/CL Rwy 10 and 33L
- REIL Rwy 15L and 33R
- HIRL all Rwy

Baltimore, Maryland

Amdt 5 05SEP24

BALTIMORE/WASHINGTON INTL THURGOOD MARSHALL (BWI)

39°11'N-76°40'W

RNAV (GPS) Y RWY 33L

NE-3, 10 JUL 2025 to 07 AUG 2025