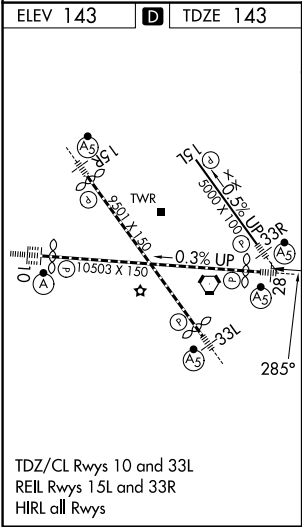
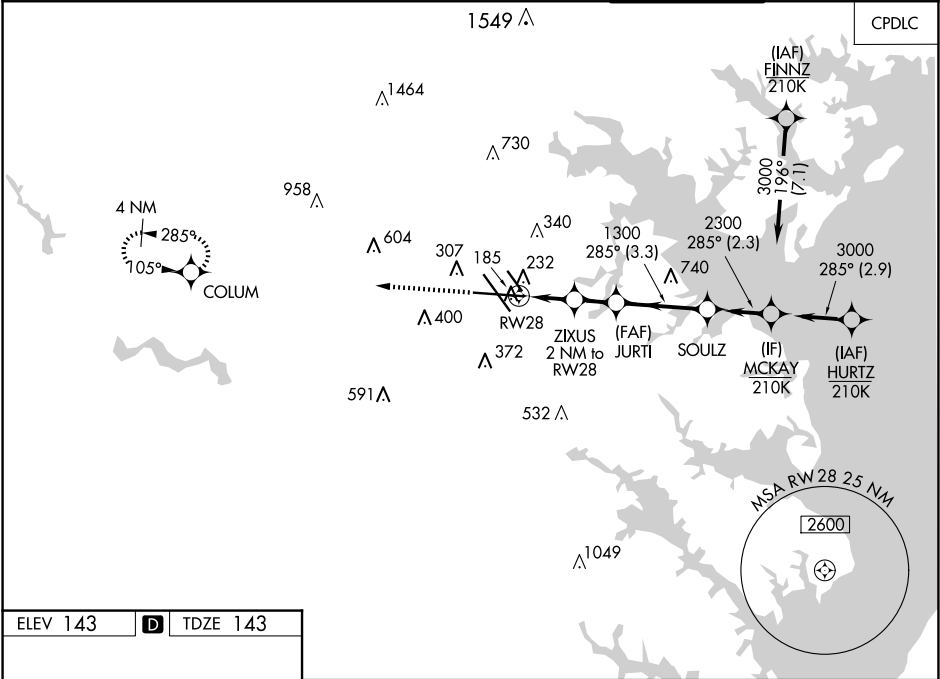


WAAS CH 48808 W28A	APP CRS 285°	Rwy Ldg TDZE Apt Elev	9803 143 143
--	------------------------	-----------------------------	---

RNAV (GPS) Y RWY 28

BALTIMORE/WASHINGTON INTL THURGOOD MARSHALL (BWI)

RNP APCH - GPS.		MALSR		MISSED APPROACH: Climb to 2500 direct COLUMN and hold.	
For uncompensated Baro-VNAV systems, LNAV/VNAV NA below -11°C or above 54°C. For inop ALS, increase LNAV/VNAV all Cats visibility to RVR 4000 and LNAV Cats C and D visibility to RVR 5500. * RVR 1800 authorized with use of FD or AP or HUD to DA.					
D-ATIS 115.1 127.8	POTOMAC APP CON (020°-100°) 119.0 282.275 (101°-130°) 124.55 317.425	(131°-180°) 119.7 290.475 (181°-019°) 128.7 307.9	BALTIMORE TOWER 119.4 257.8	GND CON 121.9	CLNC DEL 118.05



2500 COLUM		VGSi and RNAV glidepath not coincident (VGSi Angle 3.00°/TCH 75).			
RW28		ZIXUS 0.9 NM to RW28	JURTI 1.1 NM to RW28	SOULZ 1.5 NM to RW28	MCKAY 2.3 NM to RW28
		820	1300	2300	3000
0.9 NM		1.1 NM	1.5 NM	3.3 NM	2.3 NM
CATEGORY	A	B	C	D	
LPV DA *	343/24 200 (200-½)				
LNAV/VNAV DA	395/24 252 (300-½)				
LNAV MDA	500/24	357 (400-½)	500/30	357 (400-¾)	
CIRCLING	660-1	517 (600-1)	700-1½ 557 (600-1½)	880-2¼ 737 (800-2¼)	

NE-3, 10 JUL 2025 to 07 AUG 2025

NE-3, 10 JUL 2025 to 07 AUG 2025