
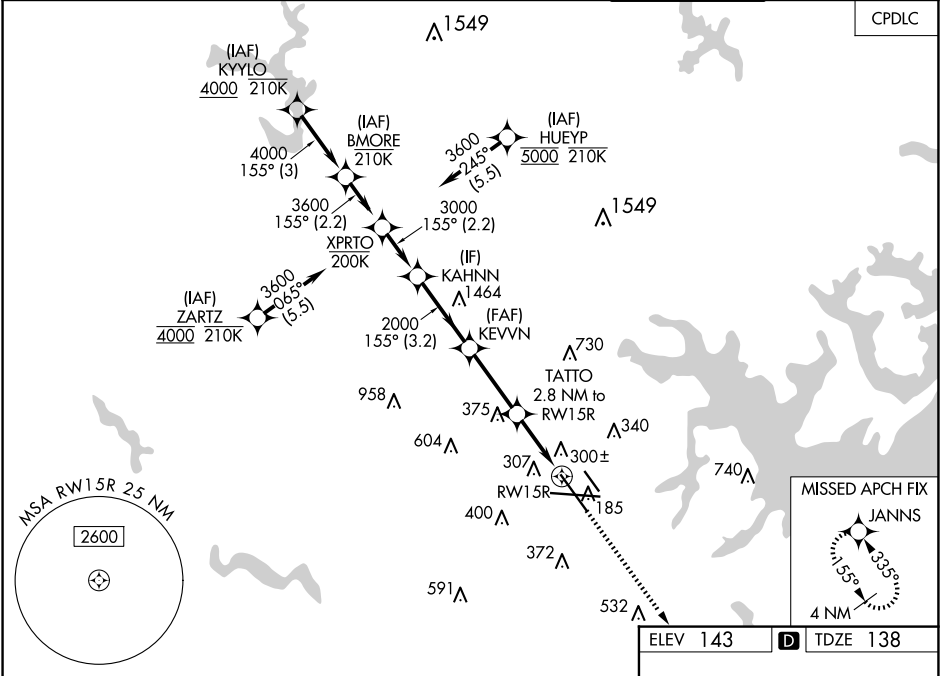


WAAS CH <b>66007</b> <b>W15B</b>	APP CRS <b>155°</b>	Rwy Ldg TDZE <b>138</b> Apt Elev <b>143</b>	<b>8301</b>
--	------------------------	---	-------------

RNAV (GPS) Y RWY 15R

BALTIMORE/WASHINGTON INTL THURGOOD MARSHALL (BWI)

RNP APCH - GPS.					MALS R	MISSED APPROACH: Climb to 2500 direct JANNS and hold.	
<div>▼ For uncompensated Baro-VNAV systems, LNAV/VNAV NA below -11°C or above 54°C. ▲ Simultaneous approach authorized with Rwy 15L. For inop ALS, increase LNAV/VNAV all Cats visibility to RVR 6000. * RVR 1800 authorized with use of FD or AP or HUD to DA.</div>					<div></div>		
D-ATIS 115.1 127.8		POTOMAC APP CON (020°-100°) 119.7 290.475 (131°-180°) 124.55 317.425 (101°-130°) 128.7 307.9 (181°-019°)			BALTIMORE TOWER 119.4 257.8	GND CON 121.9	CLNC DEL 118.05



KAHNN		VGSi and RNAV glidepath not coincident (VGSi Angle 3.00/TCH 73).		2500	JANNS
3000		155°		2000	
GP 3.00°		TCH 56		1080	
3.2 NM		2.9 NM		1.7 NM	1.1 NM
CATEGORY	A	B	C	D	
LPV DA	*338/24		200 (200-½)		
LNAV/VNAV DA	557/40		419 (500-¾)		
LNAV MDA	560/24	422 (500-½)	560/40	422 (500-¾)	
CIRCLING	640-1 497 (500-1)	660-1 517 (600-1)	700-1½ 557 (600-1½)	880-2¼ 737 (800-2¼)	

TDZ/CL Rwy 10 and 33L  
REIL Rwy 15L and 33R  
HIRL all Rwy

RNAV (GPS) Y RWY 15R

NE-3, 10 JUL 2025 to 07 AUG 2025

NE-3, 10 JUL 2025 to 07 AUG 2025