

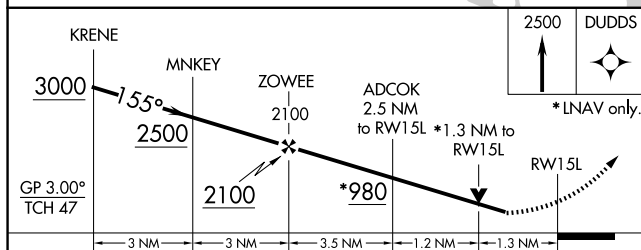
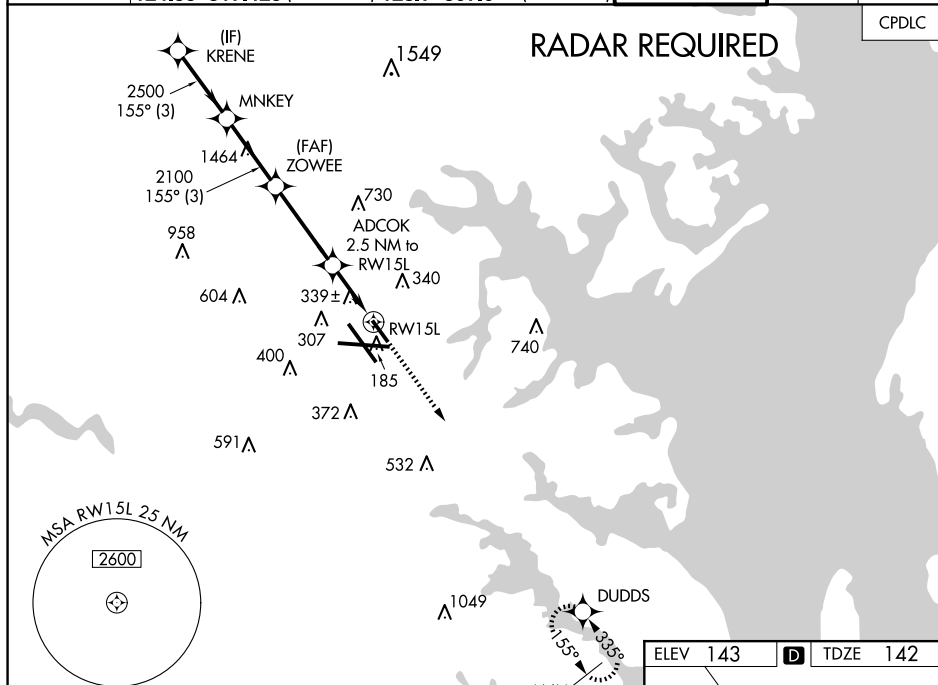
WAAS CH 40108 W15A	APP CRS 155°	Rwy Ldg TDZE Apt Elev	5000 142 143
--	------------------------	-----------------------------	---


BALTIMORE/ RNAV (GPS) RWY 15L
WASHINGTON INTL THURGOOD MARSHALL (BWI)

▼ For uncompensated Baro-VNAV systems, LNAV/VNAV NA below -13°C (9°F) or above 54°C (130°F). DME/DME RNP-0.3 NA. Helicopter visibility reduction below RVR 4000 NA. Simultaneous approach authorized. Use of FD or AP providing RNAV track guidance required during simultaneous operations. LNAV procedure NA during simultaneous operations.

MISSED APPROACH:
Climb to 2500 direct
DUDDS and hold.

D-ATIS		POTOMAC APP CON				BALTIMORE TOWER	GND CON	CLNC DEL
115.1	127.8	119.0	282.275	(020°-100°)	119.7 290.475 (131°-180°)			
		124.55	317.425	(101°-130°)	128.7 307.9 (181°-019°)	119.4 257.8	121.9	118.05



CATEGORY	A	B	C	D
LPV DA	544-1 $\frac{3}{8}$	402 (500-1 $\frac{3}{8}$)	NA	
LNAV/VNAV DA	656-1 $\frac{3}{4}$	514 (600-1 $\frac{3}{4}$)	NA	
LNAV MDA	600/55	458 (500-1)	NA	
 CIRCLING	640-1 497 (500-1)	660-1 517 (600-1)	NA	

