

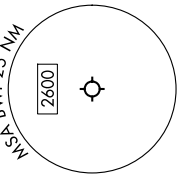
(LINSE2.LINSE) 25051

LINSE TWO DEPARTURE (RNAV)

BALTIMORE/  
WASHINGTON INTL THURGOOD MARSHALL (BWI)  
BALTIMORE, MARYLAND

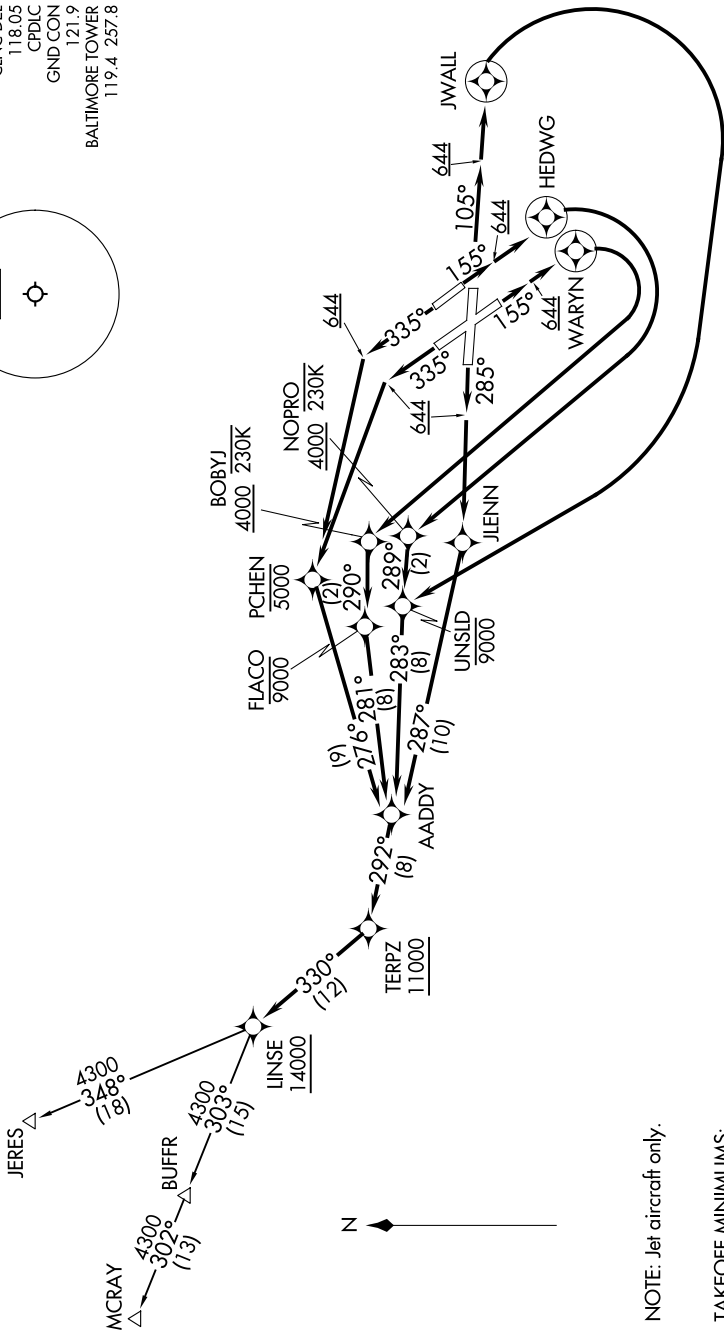
NE-3, 10 JUL 2025 to 07 AUG 2025

POTOMAC DEP CON  
128.7 307.9  
D-ATIS  
115.1 127.8  
CLNC DEL  
118.05  
CPDLC  
GND CON  
121.9  
BALTIMORE TOWER  
119.4 257.8



RNAV 1 - DME/DME/IRU or GPS.
RADAR required.

TOP ALTITUDE:  
16000



NOTE: Jet aircraft only.

TAKEOFF MINIMUMS:  
Rwy 15R: Standard with minimum climb of 780'/NM to 644.  
Rwys 10, 15L, 28, 33L/R: Standard with minimum climb of 500'/NM to 644.

(CONTINUED ON FOLLOWING PAGE)

NOTE: Chart not to scale.

LINSE TWO DEPARTURE (RNAV)  
(LINSE2.LINSE) 20FEB25

BALTIMORE/  
WASHINGTON INTL THURGOOD MARSHALL (BWI)  
BALTIMORE, MARYLAND

NE-3, 10 JUL 2025 to 07 AUG 2025