

|                                   |                        |   |
|-----------------------------------|------------------------|---|
| LOC I-BW1<br><b><u>111.95</u></b> | APP CRS<br><b>335°</b> | Rwy Ldg <b>5000</b><br>TDZE <b>124</b><br>Apt Elev <b>143</b> |
|-----------------------------------|------------------------|---|

BALTIMORE/  
WASHINGTON

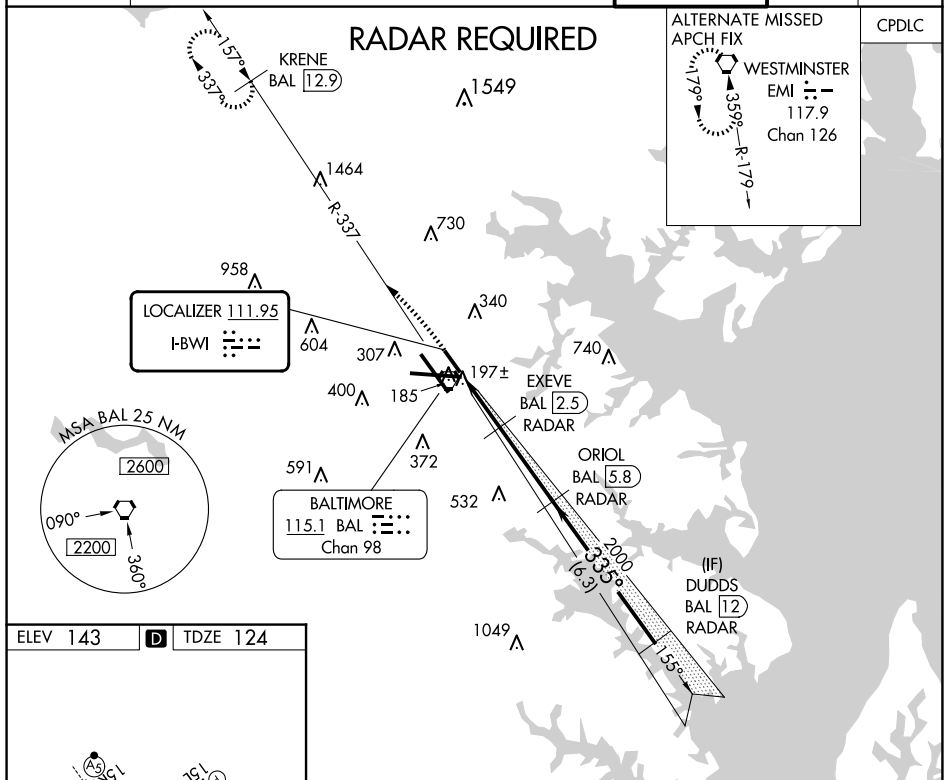
ILS or LOC RWY 33R  
NTL THURGOOD MARSHALL (BWI)

**T** DME required. DME from BAL VORTAC. Simultaneous reception of I-BWI and BAL DME required. Simultaneous approach authorized with Rwy 33L. Inoperative table does not apply to S-ILS 33R. For inoperative MALSRL, increase S-LOC 33R visibility to RVR 5000. Helicopter visibility reduction below RVR 4000 NA.



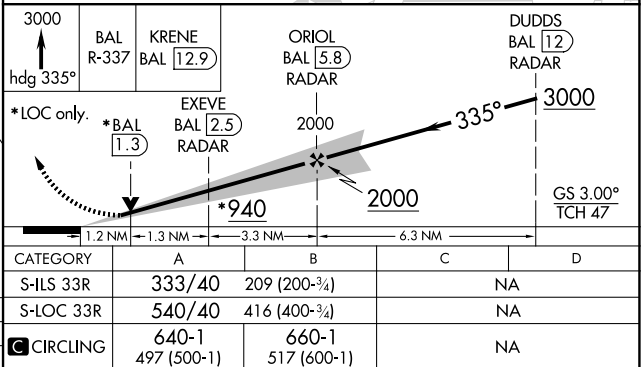
**MISSED APPROACH:** Climb to 3000 on heading 335° and BAL VORTAC R-337 to KRENE/BAL 12.9 DME and hold.

|        |       |                 |         |             |       |                 |             |             |              |
|--------|-------|-----------------|---------|-------------|-------|-----------------|-------------|-------------|--------------|
| D-ATIS |       | POTOMAC APP CON |         |             |       | BALTIMORE TOWER |             | GND CON     | CLNC DEL     |
| 115.1  | 127.8 | 119.0           | 282.275 | (020°-100°) | 119.7 | 290.475         | (131°-180°) |             |              |
|        |       | 124.55          | 317.425 | (101°-130°) | 128.7 | 307.9           | (181°-019°) | 119.4 257.8 | 121.9 118.05 |



TDZ/CL Rwys 10 and 33L  
REIL Rwys 15L and 33R  
HIRL all Rwys

|         | FAF to MAP 5.8 NM |      |      |      |      |  |
|---------|-------------------|------|------|------|------|--|
| Knots   | 60                | 90   | 120  | 150  | 180  |  |
| Min:Sec | 5:48              | 3:52 | 2:54 | 2:19 | 1:56 |  |



NE-3, 10 JUL 2025 to 07 AUG 2025