

BALTIMORE/  
WASHINGTON

## ILS or LOC RWY 33L

WASHINGTON INTL THURGOOD MARSHALL (BWI)

RADAR required for procedure entry. DME or RADAR required.

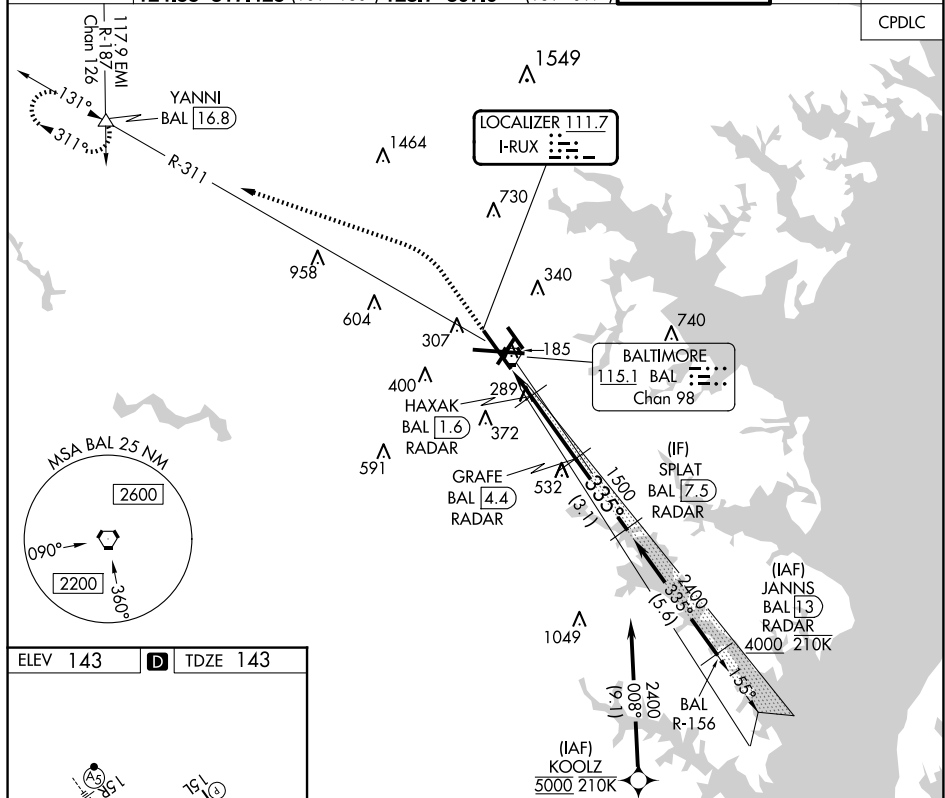
**T** Simultaneous approach authorized with ILS or LOC Rwy 33R. DME from BAL  
**A** VORTAC. DME use requires simultaneous reception of I-RUX and BAL DME.

MALSR

**MISSED APPROACH:** Climb to 600 then climbing left turn to 2600 on heading 300° and BAL VORTAC R-311 to YANNI INT/BAL 16.8 DME and hold.

D-ATIS		POTOMAC APP CON				BALTIMORE TOWER	GND CON	CLNC DEL
115.1	127.8	119.0	282.275	(020°-100°)	119.7	290.475 (131°-180°)		
		124.55	317.425	(101°-130°)	128.7	307.9 (181°-019°)	119.4 257.8	121.9 118.05

CPDLC



335°

0.3% UP

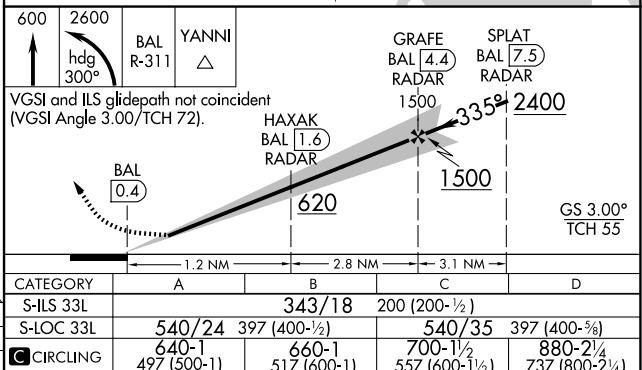
TWR

33L

33R

FAF to MAP 4.1 NM

	60	90	120	150	180
Knots	60	90	120	150	180
Min:Sec	4:06	2:44	2:03	1:38	1:22

BALTIMORE/WASHINGTON INTL THURGOOD MARSHALL (BWI)  
38°11'N-76°40'W U.S. LOG BWI 001

## ILS or LOC RWY 33L