

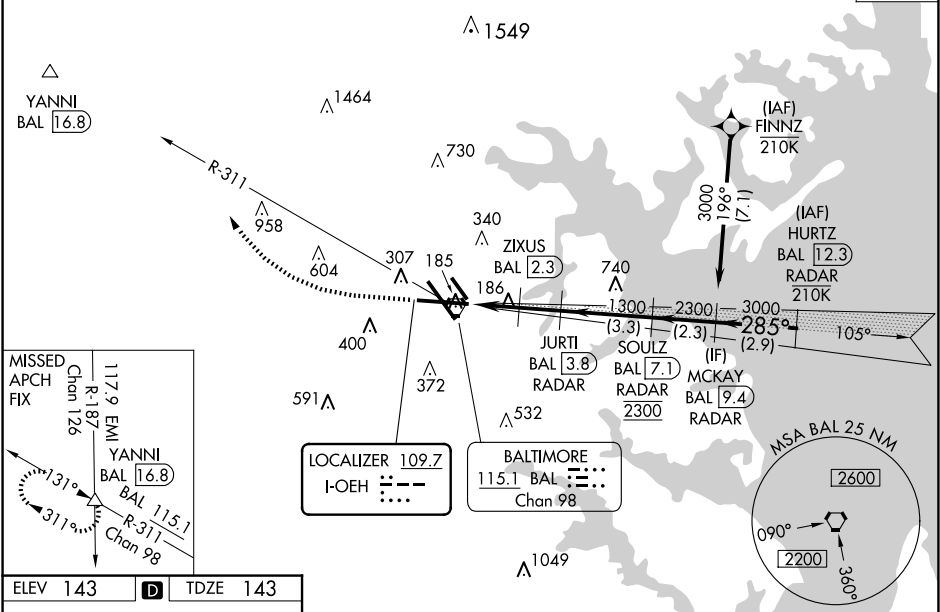
LOC I- <b>OE</b> H	APP CRS	Rwy Ldg	<b>9803</b>
<b>109.7</b>	<b>285°</b>	TDZE	<b>143</b>
		Apt Elev	<b>143</b>

BALTIMORE/  
WASHINGTON INTL THURGOOD MARSHALL (BWI)

ILS or LOC RWY 28

DME or RADAR required.	MALSR	MISSED APPROACH: Climb to 1500 then climbing right turn to 2600 on heading 319° and BAL VORTAC R-311 to YANNI INT/ BAL 16.8 DME and hold.
▼ For inop ALS, increase S-LOC 28 Cat C/D visibility to 1½ SM and increase ZIXUS fix S-LOC 28 Cat C/D visibility to RVR 4500. ▲ *RVR 1800 authorized with use of FD or AP or HUD to DA.	AS	

D-ATIS	POTOMAC APP CON	BALTIMORE TOWER	GND CON	CLNC DEL
<b>115.1 127.8</b>	<b>119.0 282.275</b> <b>124.55 317.425</b> (020°-100°) (101°-130°)	<b>119.4 257.8</b>	<b>121.9</b>	<b>118.05</b>
	<b>119.7 290.475</b> <b>128.7 307.9</b> (131°-180°) (181°-019°)			
				CPDLC



ELEV <b>143</b>	<b>D</b>	TDZE <b>143</b>
-----------------	----------	-----------------

