

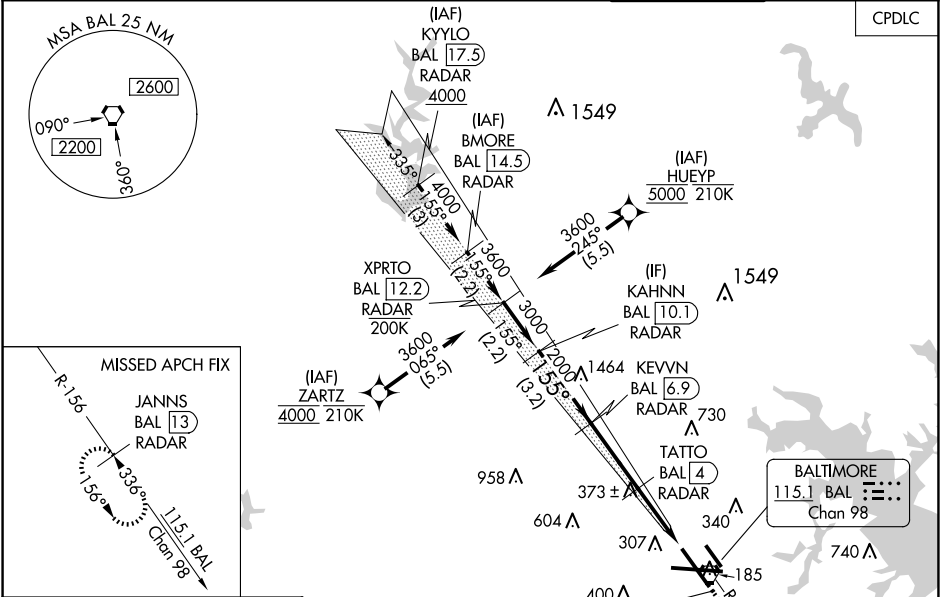
LOC I-FND	APP CRS	Rwy Ldg	8301
111.7	155°	TDZE	138
		Apt Elev	143

BALTIMORE/
WASHINGTON INTL THURGOOD MARSHALL (BWI)

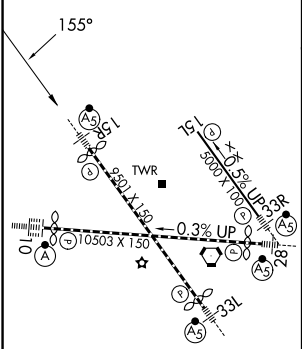
ILS or LOC RWY 15R

RNP APCH - GPS. From HUEYP or ZARTZ.	MALSR	MISSED APPROACH: Climb to 2500 on BAL VORTAC R-156 to JANNIS/BAL 13 DME/RADAR and hold.
DME or RADAR required. RADAR required for procedure entry at KYILO or BMORE.		
Simultaneous approach authorized with Rwy 15L. DME from BAL VORTAC. For inop ALS, increase LOC Cat C/D visibility to 1 3/8 SM. * RVR 1800 authorized with use of FD or AP or HUD to DA.		

D-ATIS	POTOMAC APP CON	BALTIMORE TOWER	GND CON	CLNC DEL
115.1 127.8	119.0 282.275 (020°-100°) 119.7 290.475 (131°-180°) 124.55 317.425 (101°-130°) 128.7 307.9 (181°-019°)	119.4 257.8	121.9	118.05



ELEV 143	D	TDZE 138
----------	---	----------



TDZ/CL Rwy 10 and 33L	
REIL Rwy 15L and 33R	
HIRL all Rwy	
FAF to MAP 5.7 NM	
Knots	60 90 120 150 180
Min:Sec	5:42 3:48 2:51 2:17 1:54

LOCALIZER 111.7 I-FND				
VGSi and ILS glidepath not coincident (VGSi Angle 3.00/TCH 73).				
2500 BAL R-156 JANNIS BAL 13 RADAR				
KAHNN BAL 10.1 RADAR KEVVN BAL 6.9 RADAR TATTO BAL 4 RADAR				
3000 155° 2000 1080 3.2 NM 2.9 NM 1.4 NM 1.3				
GS 3.00° TCH 56				
CATEGORY	A	B	C	D
S-ILS 15R*	338/24 200 (200-1/2)			
S-LOC 15R	640/24	502 (500-1/2)	640/55	502 (500-1)
CIRCLING	640-1 497 (500-1)	660-1 517 (600-1)	700-1 557 (600-1 1/2)	880-2 737 (800-2 1/4)