

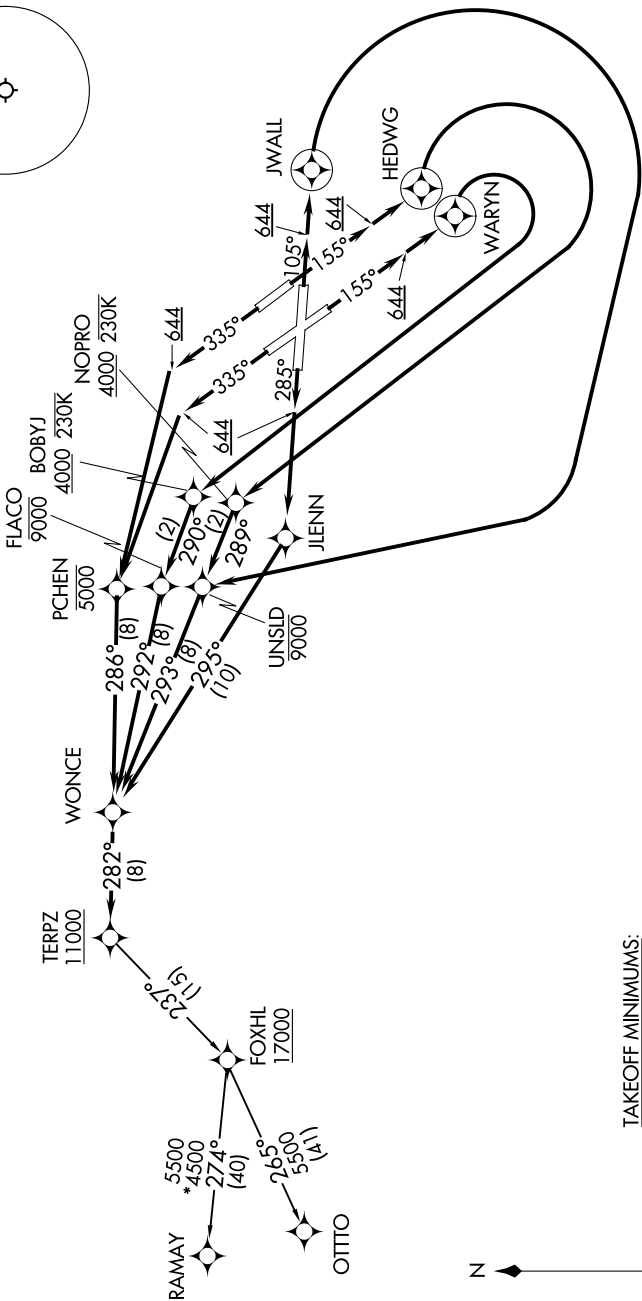
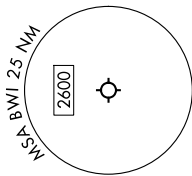
NE-3, 10 JUL 2025 to 07 AUG 2025

POTOMAC DEP CON
128.7 307.9
D-ATIS
115.1 127.8
CINC DEL
118.05
CPDLC
GNDC CON
121.9
BALTIMORE TOWER
119.4 257.8

RNAV 1 - DME/DME/IRU or GPS.

RADAR required.

TOP ALTITUDE:
17000



TAKEOFF MINIMUMS:
Rwy 15R: Standard with minimum climb of 780'/NM to 644.
Rwys 10, 15L, 28, 33L/R: Standard with minimum climb of 500'/NM to 644.

NOTE: Jet aircraft only.
(CONTINUED ON FOLLOWING PAGE)

NE-3, 10 JUL 2025 to 07 AUG 2025