

24361

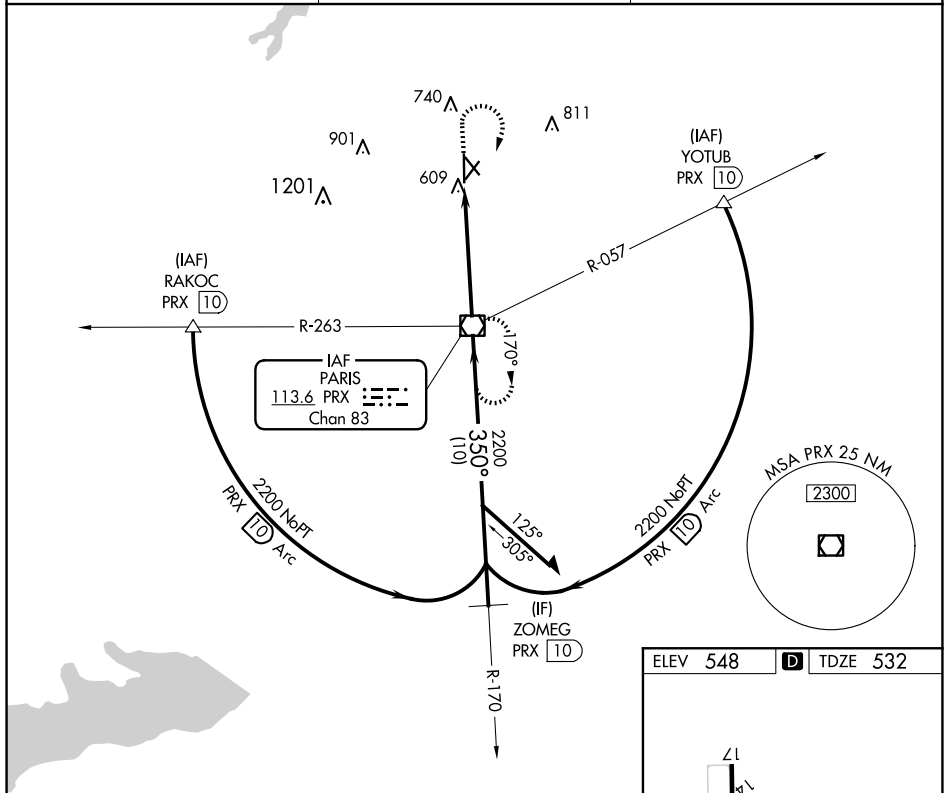
VOR/DME PRX <b><u>113.6</u></b> Chan <b>83</b>	APP CRS <b>350°</b>	Rwy Idg <b>6002</b> TDZE <b>532</b> Apt Elev <b>548</b>
--	------------------------	---

VOR RWY 35  
COX FLD (PRX)

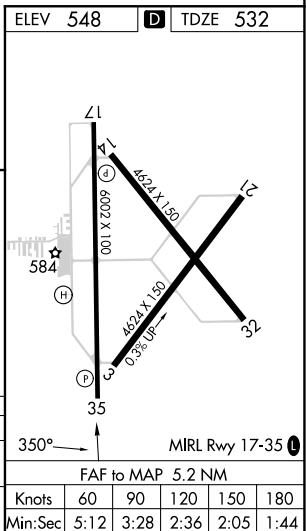
**T**  
**A** Rwy 35 helicopter visibility reduction below  $\frac{3}{4}$  SM NA.

**MISSED APPROACH:** Climb to 2000 then climbing right turn to 2300 direct PRX VOR/DME and hold.

AWOS-3PT <b>119.675</b>	FORT WORTH CENTER <b>124.875</b>	UNICOM <b>122.975</b> (CTAF) <b>0</b>
----------------------------	-------------------------------------	--



CATEGORY	A	B	C	D
S-35	960-1	428 (500-1)	960-1¼	428 (500-1¼)
CIRCLING	1060-1	512 (600-1)	1100-1½ 552 (600-1½)	1220-2¼ 672 (700-2¼)



PARIS, TEXAS  
Amdt 2C 23FEB23

33°38'N-95°27'W

COX FLD (PRX)  
VOR RWY 35

SC-2, 10 JUL 2025 to 07 AUG 2025