

WAAS CH 78207 W15A	APP CRS 146°	Rwy Ldg 5006 TDZE 2193 Apt Elev 2193
----------------------------------------	------------------------	-----------------------------------------------------------------

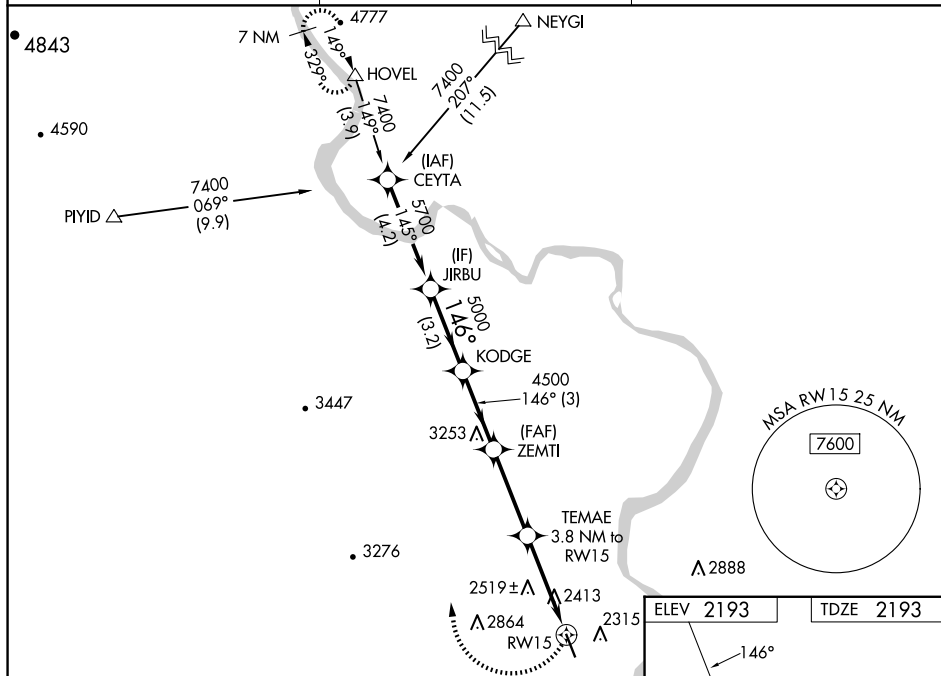
RNAV (GPS) RWY 15
ONTARIO MUNI (ONON)

T Baro-VNAV NA when using **Caldwell** altimeter setting. For uncompensated Baro-VNAV systems, LNAV/VNAV NA below -18°C (0°F) or above 54°C (130°F). DME/DME RNP-0.3 NA.

A When local altimeter setting not received, use **Caldwell** altimeter setting and increase LPV DA to 2867 feet, LNAV/VNAV DA to 2911 feet, and all MDA 100 feet; increase LPV visibility, all Cats by ½ SM, increase LNAV visibility Cats C/D and Circling Cat C by ¼ SM. Rwy 15 helicopter visibility reduction below 1 SM NA. Straight-in Rwy 15 NA at night, Circling Rwy 15 NA at night.

MISSED APPROACH:
Climbing right turn to
9000 direct HOVEL
and hold, continue
climb-in-hold to 9000.

ASOS 135.275	SALT LAKE CENTER 128.05 306.95	UNICOM 122.8 (CTAF) ①
------------------------	------------------------------------------	---------------------------------



CATEGORY	A	B	C	D
LPV DA	2769-2 576 (600-2)			
LNAV/VNAV DA	2814-2½ 621 (700-2½)			
LNAV MDA	2780-1 587 (600-1)		2780-1¾ 587 (600-1¾)	
C CIRCLING	2780-1 587 (600-1)	2800-1 607 (700-1)	3120-2¾ 927 (1000-2¾)	3240-3 1047 (1100-3)

ELEV 2193		TDZE 2193
-----------	--	-----------

3.1.12

A triangle with interior angles labeled 146° , 100° , and 100° .

↓

15

