

VOR/DME RLY
114.8
Chan **95**

APP CRS
157°

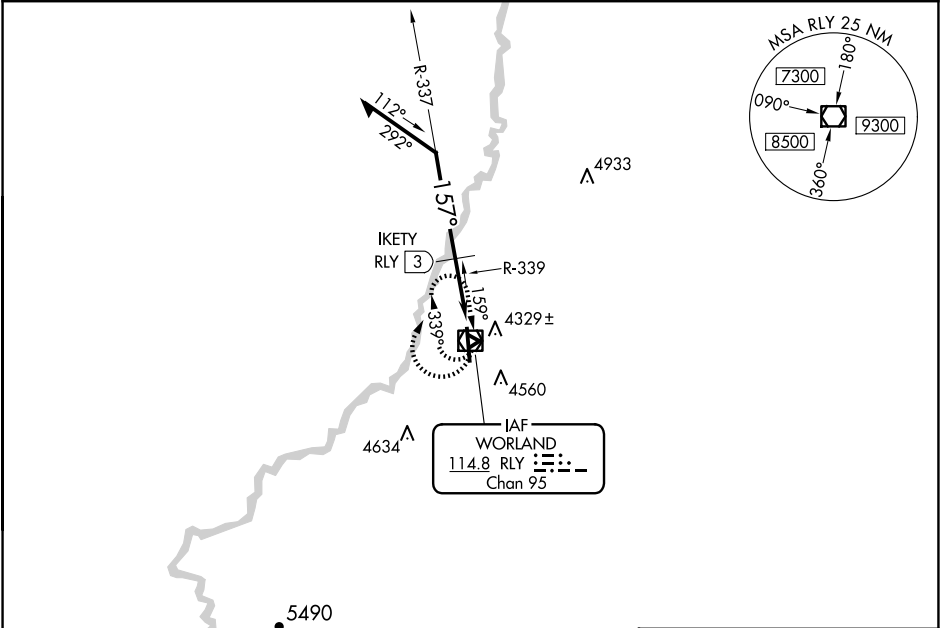
Rwy Idg
TDZE **4202**
Apt Elev **4252**

VOR RWY 16
WORLAND MUNI (WRL)

⚠ When local altimeter setting not received, use Greybull altimeter setting: increase all MDAs 140 feet; all Cats, and Circling Cat C/D visibilities ½ SM. Helicopter visibility reduction below ¾ SM NA. VDP NA with Greybull altimeter setting.

MISSED APPROACH:
Climbing right turn to 7000 in RLY VOR/DME holding pattern.

ASOS 135.475	SALT LAKE CENTER 133.25 285.6	UNICOM 123.05 (CTAF) 0
------------------------	---	----------------------------------



VGSI and descent angle not coincident (VGSI Angle 3.00/TCH 41).
Remain within 10 NM

6000

337°

157°

2.98°

TCH 63

1.3 NM

1.2

0.5

7000

RLY

* 5180 when using Greybull altimeter setting.

CATEGORY	A	B	C	D
S-16	5040-1 838 (800-1)	5040-1¼ 838 (800-1¼)	5040-2½	838 (800-2½)
CIRCLING	5040-1 788 (800-1)	5040-1¼ 788 (800-1¼)	5040-2½	788 (800-2½)

IKETY FIX MINIMUMS

S-16	4600-1 398 (400-1)	4600-1¼ 398 (400-1¼)
CIRCLING	4920-1 668 (700-1)	4920-1¾ 668 (700-1¾) 5020-2½ 768 (800-2½)

ELEV 4252

D

TDZE 4202

157° to VOR/DME

91

1.13% UP

4223

2502 X 60

1.0% UP

2241 X 60

0.5% UP

7000 X 100

34

REIL Rwy 16 and 34 0
MIRL Rwy 16-34 0

NW-1, 10 JUL 2025 to 07 AUG 2025

NW-1, 10 JUL 2025 to 07 AUG 2025