

WAAS CH 40228 W16A	APP CRS 162°	Rwy Idg TDZE Apt Elev 7000 4202 4252
--	------------------------	--

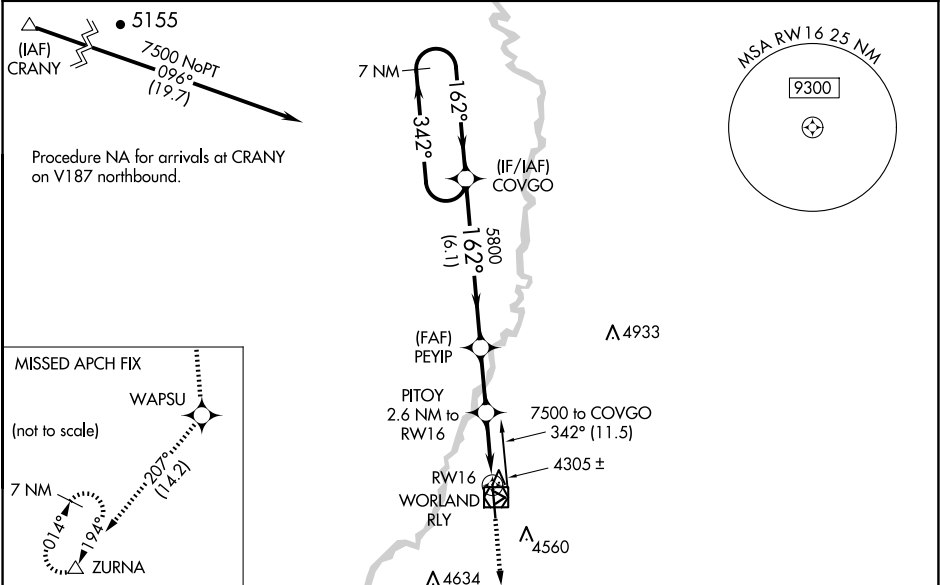
RNAV (GPS) RWY 16
WORLAND MUNI (WRL)

⚠

For uncompensated Baro-VNAV systems, LNAV/VNAV NA below -32°C (-25°F) or above 17°C (62°F). DME/DME RNP-0.3 NA. VDP and Baro-VNAV NA with Greybull altimeter setting. When local altimeter setting not received, use Greybull altimeter setting: increase LPV DA to 4574 feet, LNAV/VNAV DA to 4616 feet, and all MDA's 140 feet; increase LPV, LNAV/VNAV and LNAV all Cats, and Circling Cat C/D visibilities ½ SM. Helicopter visibility reduction below ¾ SM NA.

MISSED APPROACH: Climb to 9600 direct WAPSU and on track 207° to ZURNA and hold, continue climb-in-hold to 9600.

ASOS 135.475	SALT LAKE CENTER 133.25 285.6	UNICOM 123.05 (CTAF) 0
------------------------	---	----------------------------------



VGSI and RNAV glidepath not coincident (VGSI Angle 3.00/TCH 41).

7 NM Holding Pattern

COVGO

7500

342°

162°

162°

5800

GP 3.00°
TCH 55

6.1 NM

2.3 NM

1.5 NM

1.1 NM

PEYIP 5800

PITOIY 2.6 NM to RW16

*1.1 NM to RW16

RW16

*5040

*LNAV only

9600	WAPSU	ZURNA
↑	✧	△
	tr 207°	

ELEV 4252 D TDZE 4202

162° to RW16

91

1.1% UP

4223

1.0% UP

2502 X 60

1.9% UP

0.5% UP

2241 X 60

7000 X 100

34

REIL Rwy 16 and 34

MIRL Rwy 16-34

CATEGORY	A	B	C	D
LPV DA	4452-¾ 250 (200-¾)			
LNAV/VNAV DA	4494-⅞ 292 (300-⅞)			
LNAV MDA	4560-1 358 (400-1)		4560-1½ 358 (400-1½)	
CIRCLING	4920-1 668 (700-1)		4920-1¾ 5020-2½ 768 (800-2½)	

NW-1, 10 JUL 2025 to 07 AUG 2025

NW-1, 10 JUL 2025 to 07 AUG 2025