

WAAS	APP CRS	Rwy Idg	5343
CH 97421	053°	TDZE	124
W05A		Apt Elev	125

RNAV (GPS) RWY 5

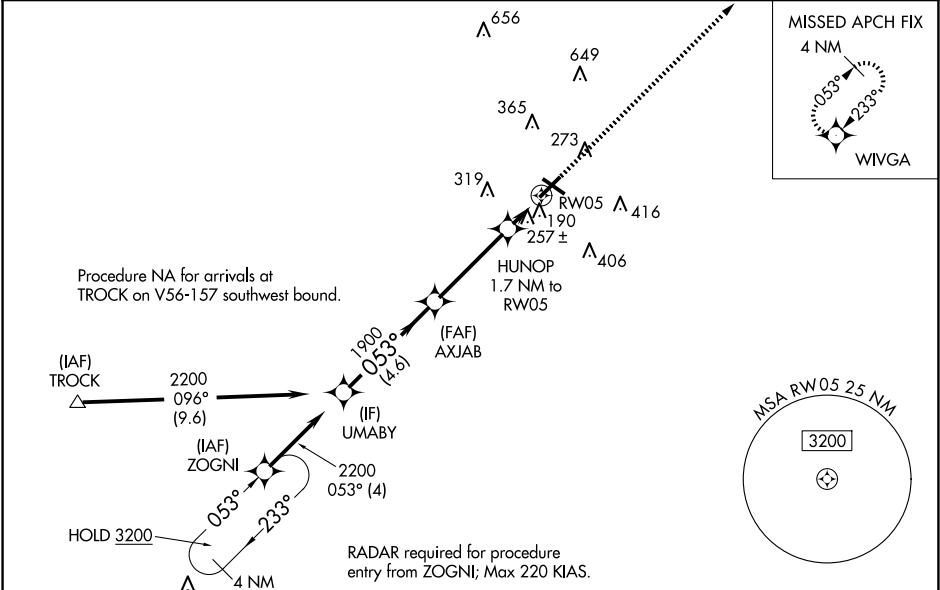
LUMBERTON RGNL (LBT)

RNP APCH - GPS.

When local altimeter setting not received, use Maxton altimeter setting: increase LPV DA to 383 feet; LNAV/VNAV DA to 594 feet and all visibility ¼ SM; increase all MDAs 60 feet and LNAV visibility Cat C and Circling Cat C ¼ SM. Baro-VNAV and VDP NA when using Maxton altimeter setting. Circling Rwy 13, 31 NA at night. For uncompensated Baro-VNAV systems, LNAV/VNAV NA below -15°C or above 54°C.

MISSED APPROACH:
Climb to 2000 direct
WIVGA and hold.

ASOS 134.775	FAYETTEVILLE APP CON 133.0 290.25	UNICOM 122.8 (CTAF)
-----------------	--------------------------------------	------------------------



UMABY				2000 ↑ * LNAV only.		WIVGA ✧	
2200 Procedure Turn NA GP 3.00° TCH 60		AXJAB 1900		HUNOP 1.7 NM to RW05		* 1.1 NM to RW05	
053°		1900		720*		RW05	
4.6 NM		3.7 NM		0.6		1.1	
CATEGORY	A		B		C		D
LPV DA	327-¾		203 (300-¾)				NA
LNAV/VNAV DA	538-1⅛		414 (500-1⅛)				NA
LNAV MDA	520-1		396 (400-1)		520-1⅛ 396 (400-1⅛)		NA
CIRCLING	660-1		535 (600-1)		720-1½ 595 (600-1½)		NA

