

WAAS	APP CRS	Rwy Idg	5505
CH 50221	233°	TDZE	124
W23A		Apt Elev	125

RNAV (GPS) RWY 23

LUMBERTON RGNL (LBT)

RNP APCH - GPS.

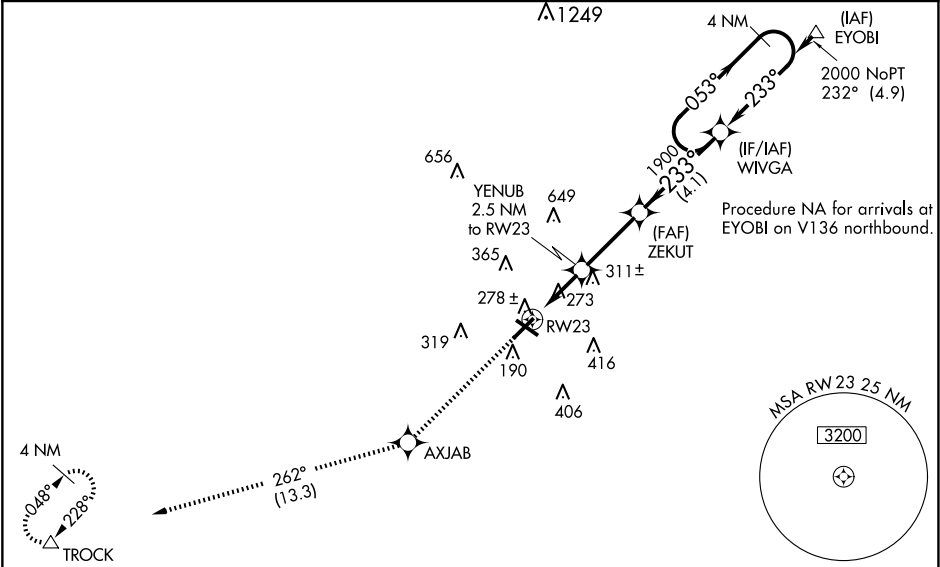
▼

▲

Rwy 23 helicopter visibility reduction below ¾ SM NA. When local altimeter setting not received, use Maxton altimeter setting; increase LPV DA to 469 feet and all visibility ½ SM; LNAV/VNAV DA to 495 feet and all visibility ⅓ SM; increase all MDAs 60 feet and Circling visibility Cat C ¼ SM. Baro-VNAV and VDP NA when using Maxton altimeter setting. Circling to Rwy 13 and 31 NA at night. For uncompensated Baro-VNAV systems, LNAV/VNAV NA below -15°C or above 54°C.

MISSED APPROACH:
Climb to 2200 direct AXJAB and on track 262° to TROCK and hold.

ASOS 134.775	FAYETTEVILLE APP CON 133.0 290.25	UNICOM 122.8 (CTAF) 0
-----------------	--------------------------------------	--------------------------



ELEV 125

TDZE 124

2200

AXJAB

tr 262°

TROCK

VGSI and RNAV glidepath not coincident (VGSI Angle 3.20/TCH 45).

233°

5007 X

5505 X 150

500

75

31

* LNAV only.

YENUB 2.5 NM to RW23

ZEKUT 1900

WIVGA 4 NM Holding Pattern

053°

2000

233°

1900

960 *

GP 3.00° TCH 52

CATEGORY	A	B	C	D
LPV DA	413-7⁄8	289 (300-7⁄8)		NA
LNAV/VNAV DA	439-7⁄8	315 (400-7⁄8)		NA
LNAV MDA	580-1	456 (500-1)	580-13⁄8 456 (500-13⁄8)	NA
CIRCLING	660-1	535 (600-1)	720-1½ 595 (600-1½)	NA

MIRL Rwy 5-23 0

REIL Rwys 5 and 23 0