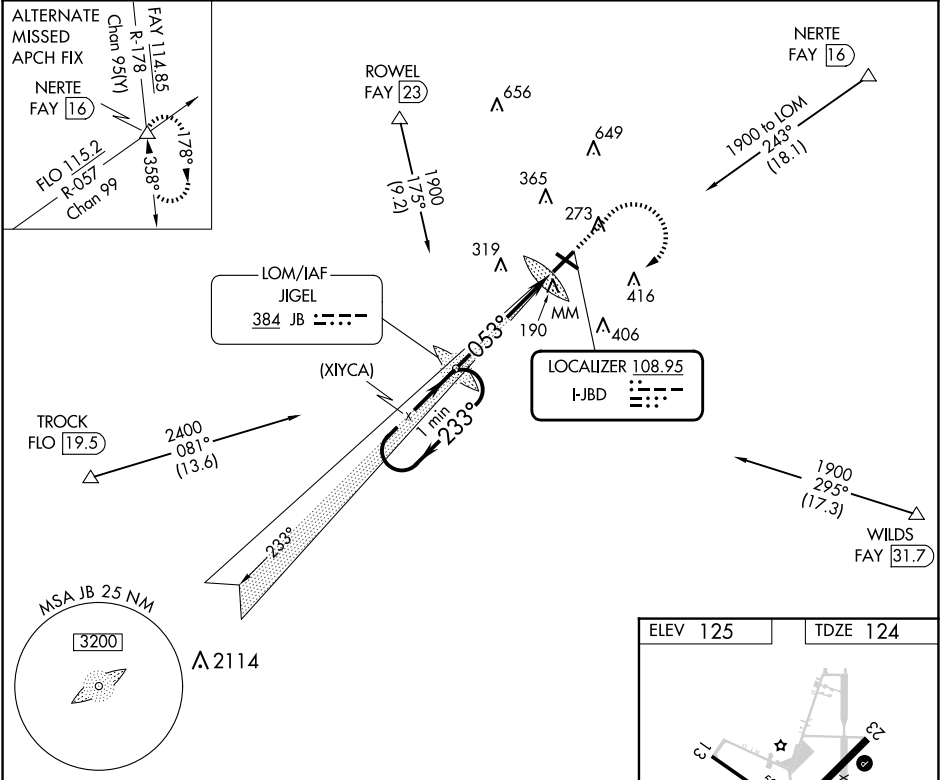


LOC I-JBD	APP CRS	Rwy Idg	5343
108.95	053°	TDZE	124
		Apt Elev	125

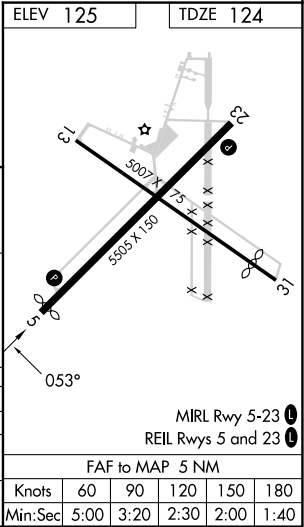
ILS or LOC RWY 5
LUMBERTON RGNL (LBT)

ADF required.	MISSED APPROACH: Climb to 1000 then climbing right turn to 1900 direct JIGEL LOM and hold.
When local altimeter setting not received, use Maxton altimeter setting and increase DA to 416 feet and all visibility $\frac{1}{8}$ SM; increase all MDA to 60 feet and S-LOC 5 visibility Cat C $\frac{1}{8}$ SM and Circling visibility Cat C $\frac{1}{4}$ SM. Circling Rwy 13, 31 NA at night. Autopilot coupled approach NA below 1250.	

ASOS 134.775	FAYETTEVILLE APP CON 133.0 290.25	UNICOM 122.8 (CTAF) 0
-----------------	--------------------------------------	--------------------------



One Minute Holding Pattern		JB JIGEL LOM	1000	1900	JB
1900 ← 233°		1799	↑	↪	↻
GS 3.00°		MM			
TCH 60		4.6 NM	0.4		
CATEGORY	A	B	C	D	
S-ILS 5	360- $\frac{3}{4}$	236 (300- $\frac{3}{4}$)		NA	
S-LOC 5	600-1	476 (500-1)	600-1 $\frac{3}{8}$ 476 (500-1 $\frac{3}{8}$)	NA	
CIRCLING	660-1	535 (600-1)	720-1 $\frac{1}{2}$ 595 (600-1 $\frac{1}{2}$)	NA	



SE-2, 10 JUL 2025 to 07 AUG 2025

SE-2, 10 JUL 2025 to 07 AUG 2025