

VOR/DME PUV 117.15 Chan 118 (Y)	APP CRS 027°	Rwy Idg TDZE Apt Elev 7100 2567 2567
-----------------------------------------------------	------------------------	--------------------------------------------------------------------------

VOR RWY 5

PULLMAN/MOSCOW RGNL (PUW)

DME required.

▼

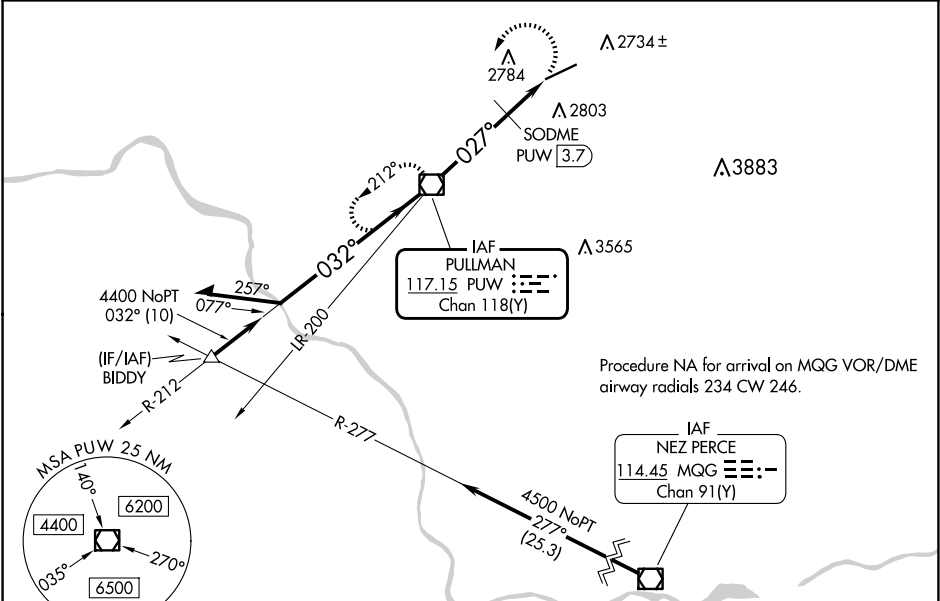
▲

Procedure NA at night.
Rwy 5 helicopter visibility reduction below 1 SM NA.
Inop table does not apply to S-5 and SODME fix minimums Cats A/B.
For inop ALS, increase S-5 SODME fix minimums Cat C/D visibility to 1 3⁄8 SM.

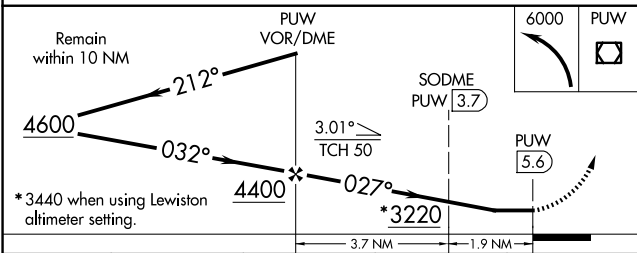
MALSR

MISSED APPROACH: Climbing left turn to 6000 direct PUW VOR/DME and hold, continue climb-in-hold to 6000.

ASOS 135.675	SEATTLE CENTER 123.95 290.55	UNICOM 122.8 (CTAF) 0
------------------------	----------------------------------------	----------------------------------------



ELEV 2567	D	TDZE 2567
-----------	----------	-----------



CATEGORY	A	B	C	D
S-5	3220/50	653 (700-1)	3220-1 3⁄8	653 (700-1 3⁄8)
CIRCLING	3220-1	653 (700-1)	3220-1 7⁄8	3420-2 3⁄4
			653 (700-1 3⁄8)	853 (900-2 3⁄4)
SODME FIX MINIMUMS				
S-5	3080-1	3120-1	3140-1 1⁄2	3420-2 3⁄4
	513 (600-1)	553 (600-1)	573 (600-1 1⁄2)	853 (900-2 3⁄4)
CIRCLING				

