

WAAS CH 49005 W12A	APP CRS 123°	Rwy Idg 6000 TDZE 548 Apt Elev 549
--	------------------------	---

RNAV (GPS) RWY 12

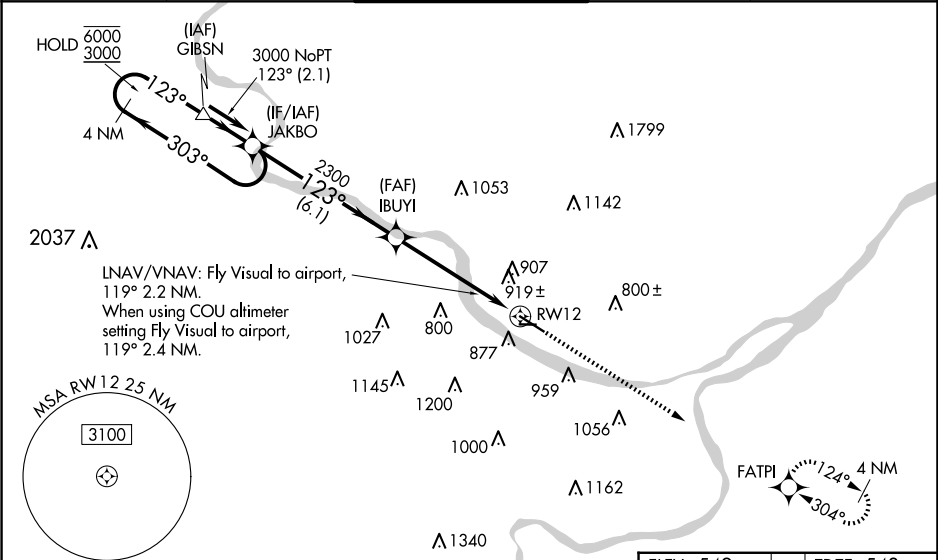
JEFFERSON CITY MEML (JEF)

RNP APCH - GPS.

For uncompensated Baro-VNAV systems, LNAV/VNAV NA below -16°C or above 54°C. Rwy 12 helicopter visibility reduction below ¾ SM NA. Circling Rwy 9 NA at night. When local altimeter setting not received, use COU altimeter setting and increase LPV DA to 1031 feet and all visibilities ¼ SM. Increase LNAV/VNAV DA to 1364 feet and all visibilities ½ SM. Increase all MDAs 80 feet and LNAV visibility Cat B/C/D ½ SM, and Circling visibility Cat A/B/C ¼ SM. Baro-VNAV and VDP NA when using COU altimeter setting.

MISSED APPROACH: Climb to 2800 direct FATPI and hold.

ASOS 133.625	MIZZU APP CON 124.375 353.925	JEFFERSON CITY TOWER ★ 125.6 (CTAF) 0	GND CON 121.7	UNICOM 122.95
------------------------	---	---	-------------------------	-------------------------



VGSI and RNAV glidepath not coincident (VGSI Angle 3.50/TCH 64).		2800 ↑		FATPI	
4 NM Holding Pattern		JAKBO		IBUYI	
6000 ← 303°		123° →		123°	
GP 3.00°		TCH 45		2300	
		6.1 NM		3.5 NM	
		1.8 NM		RWY 12	
CATEGORY		A	B	C	D
LPV DA		951-1½ 403 (500-1½)			
LNNAV/VNAV DA		1284-2 736 (800-2)		1284-2¼ 736 (800-2¼)	
LNNAV MDA		1260-1 712 (800-1)		1260-2 712 (800-2)	
CIRCLING		1280-1 731 (800-1)		1320-2¼ 771 (800-2¼)	
				1560-3 1011 (1100-3)	

REIL Rws 9, 12, and 27 0

MIRL Rwy 9-27

HIRL Rwy 12-30 0

TWR 595

6000 X 100

3401 X 75

27

30

AS