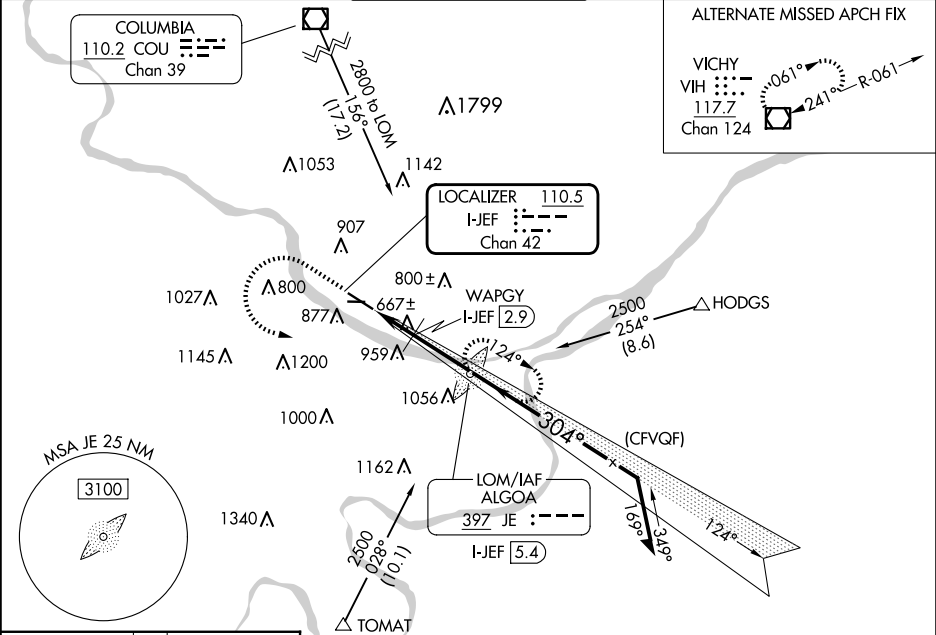


LOC/DME I-JEF	APP CRS	Rwy Idg	6000
110.5	304°	TDZE	549
Chan 42		Apt Elev	549

ILS or LOC RWY 30

JEFFERSON CITY MEML (JEF)

ADF required. Circling Rwy 9 NA at night. For inop ALS increase S-LOC 30 Cats C/D visibility to 1¾ SM and WAPGY fix minimums: S-LOC 30 Cats C/D visibility to 1 SM.		MALSR 	MISSED APPROACH: Climb to 1500 then climbing left turn to 2800 direct ALGOA LOM and hold, continue climb-in-hold to 2800.	
ASOS 133.625	MIZZU APP CON 124.375 353.925	JEFFERSON CITY TOWER★ 125.6 (CTAF) 0	GND CON 121.7	UNICOM 122.95



ELEV 549

TDZE 549

HIRL Rwy 12-30

MIRL Rwy 9-27

REIL Rwys 9, 12, and 27

FAF to MAP 4.2 NM

Knots	60	90	120	150	180
Min:Sec	4:12	2:48	2:06	1:41	1:24

1500		2800		JE		JE LOM ALGOA I-JEF 5.4		VGSI and ILS glidepath not coincident (VGSI Angle 3.00/TCH 50).	
				WAPGY I-JEF 2.9		1941		Remain within 10 NM	
I-JEF 1.2		I-JEF 2.2						2500	
				1160				2000	
-1 NM		-0.8		2.5 NM				GS 3.00° TCH 54	
CATEGORY		A		B		C		D	
S-ILS 30				749-½		200 (200-½)			
S-LOC 30		1160-½		611 (700-½)		1160-1¾		611 (700-1¾)	
C CIRCLING		1280-1		731 (800-1)		1320-2¼ 771 (800-2¼)		1560-3 1011 (1100-3)	