

| | | | |
|--------|---------|----------|------|
| LOM AW | APP CRS | Rwy Idg | 5332 |
| 382 | 342° | TDZE | 135 |
| | | Apt Elev | 142 |

NDB RWY 34
ARLINGTON MUNI (AWO)

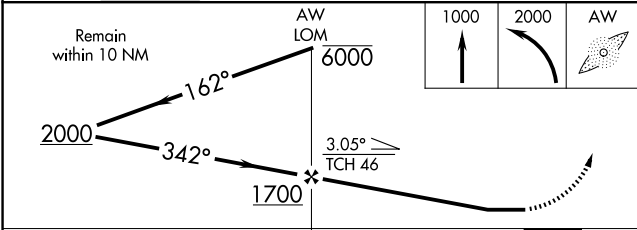
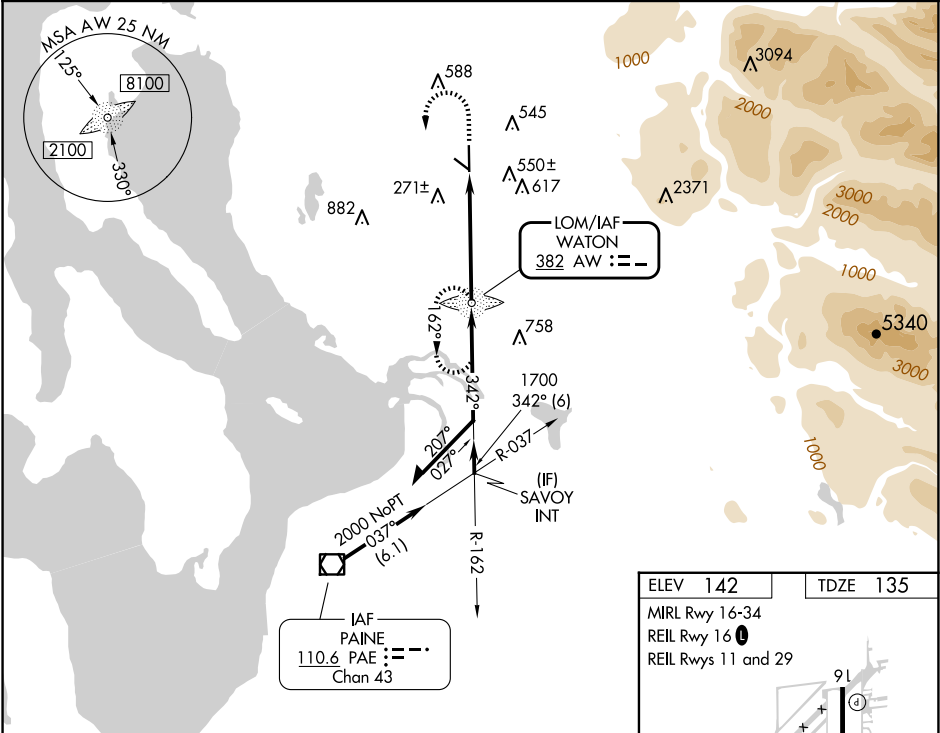
NA

When local altimeter setting not received, use Whidbey Island NAS (Ault Field) altimeter setting: increase all MDA 80 feet and visibility S-34 Cats B, C, and D and Circling Cats B and C ¼ SM. For inop MALS when using Whidbey Island NAS (Ault Field) altimeter setting, increase S-34 Cats C and D visibility to 2½.

MALS

MISSED APPROACH: Climb to 1000 then climbing left turn to 2000 direct AW LOM and hold.

| | | | |
|---------------------|--------------------------------|---------------------|-------------------|
| AWOS-3PT 135.625 | SEATTLE APP CON 128.5 306.9 | CLNC DEL 121.725 | CTAF 122.725 0 |
|---------------------|--------------------------------|---------------------|-------------------|



ELEV 142

TDZE 135

MIRL Rwy 16-34

REIL Rwy 16 0

REIL Rws 11 and 29

FAF to MAP 4.7 NM

| | | | | | |
|---------|------|------|------|------|------|
| Knots | 60 | 90 | 120 | 150 | 180 |
| Min:Sec | 4:42 | 3:08 | 2:21 | 1:53 | 1:34 |

NW-1, 10 JUL 2025 to 07 AUG 2025

NW-1, 10 JUL 2025 to 07 AUG 2025