

VICTORVILLE, CALIFORNIA

AL-794 (FAA)

25051

WAAS CH 97746 W35A	APP CRS 346°	Rwy Idg 13052 TDZE 2885 Apt Elev 2885
--	------------------------	--

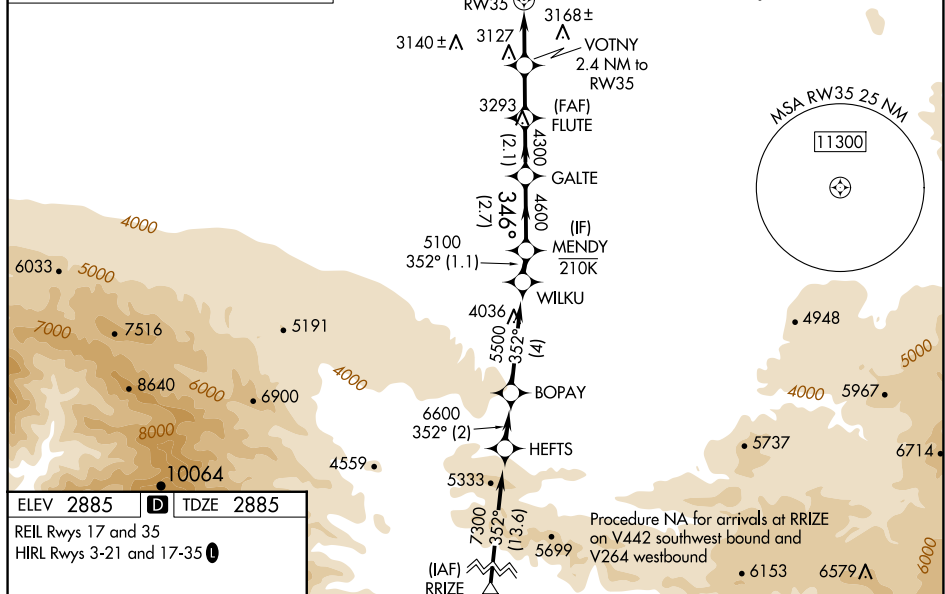
RNAV (GPS) RWY 35
SOUTHERN CALIFORNIA LOGISTICS (VCV)

RNP APCH - GPS.

T Circling NA for C and D southeast of Rwy 35 and 21.
A For uncompensated Baro-VNAV systems, LNAV/VNAV NA below -20°C or above 54°C.

MISSED APPROACH: Climb to 3500 then climbing left turn to 6000 direct NASTE and on track 249° to ETHER and hold.

ATIS 135.475	JOSHUA APP CON 124.55 363.0	VICTORVILLE TOWER ★ 118.35(CTAF) 0 282,225	GND CON 124.45
------------------------	---------------------------------------	--	--------------------------

[illegible]

VICTORVILLE, CALIFORNIA

Orig 25JAN24

SOUTHERN CALIFORNIA LOGISTICS (VCV)

34°36'N-117°23'W

RNAV (GPS) RWY 35

SW-3, 10 JUL 2025 to 07 AUG 2025

SW-3, 10 JUL 2025 to 07 AUG 2025