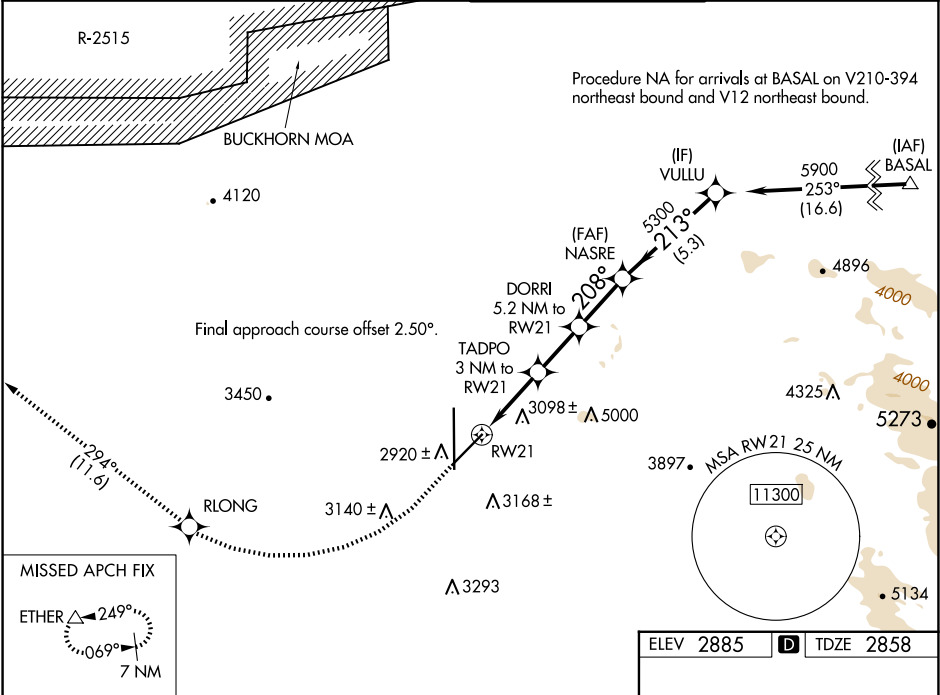


WAAS CH 82246 W21A	APP CRS 208°	Rwy Idg TDZE 2858 Apt Elev 2885
--	------------------------	---

RNAV (GPS) RWY 21

SOUTHERN CALIFORNIA LOGISTICS (VCTV)

RNP APCH - GPS.		MISSED APPROACH: Climb to 3500 then climbing right turn to 6000 direct RLONG and on track 294° to ETHER and hold.	
Circling NA for C and D southeast of Rwy 35 and 21. For uncompensated Baro-VNAV systems, LNAV/VNAV NA below -20°C or above 54°C.			
ATIS 135.475	JOSHUA APP CON 124.55 363.0	VICTORVILLE TOWER ★ 118.35 (CTAF) 0 282.225	GND CON 124.45



3500	6000	RLONG	tr 294°	ETHER	VGSI and RNAV glidepath not coincident (VGSI Angle 3.00/TCH 85).	
NASRE 5300 213° 5900						
TADPO 3 NM to RW21 208° 4560						
DORRI 5.2 NM to RW21 5300						
RW21 1.7 NM to RW21 3860						
GP 3.00° TCH 60						
1.7 NM 1.3 NM 2.2 NM 2.3 NM 5.3 NM						
CATEGORY	A	B	C	D		
LPV DA	3108-1		250 (300-1)			
LNAV/VNAV DA	3153-1		295 (300-1)			
LNAV MDA	3480-1 622 (600-1)		3480-1¾ 622 (600-1¾)			
CIRCLING	3480-1 595 (600-1)		3480-1¾ 595 (600-1¾)		3760-2¾ 875 (900-2¾)	

