

LOC/DME I-SVC  
**111.7**  
Chan **54**

APP CRS  
**262°**

Rwy Ldg  
TDZE  
Apt Elev  
**6803**  
**5380**  
**5446**

LOC RWY 26  
GRANT COUNTY (SVC)

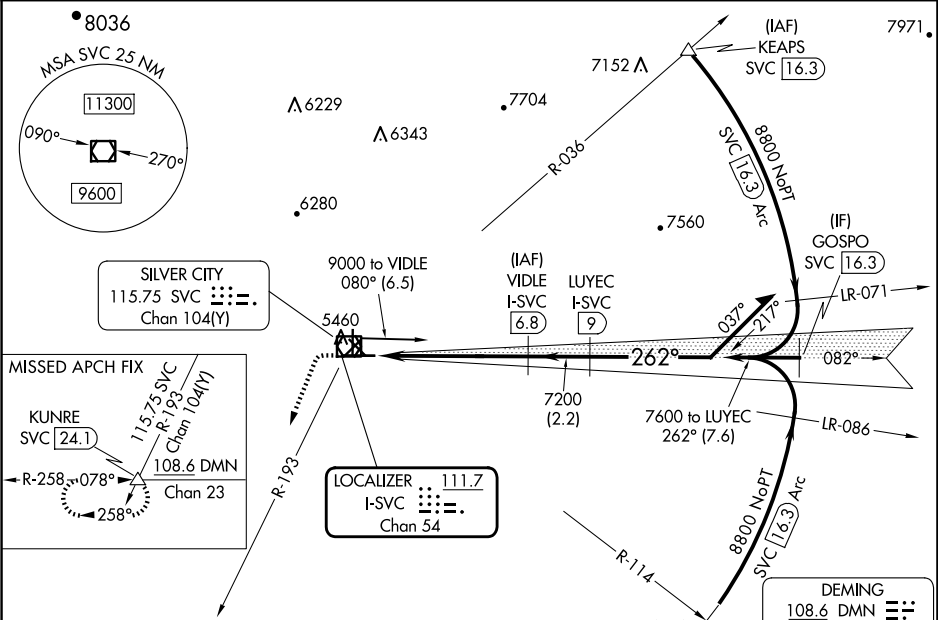
DME required.

NA Circling NA to Rwys 3, 12, 17, 21, 30 and 35.

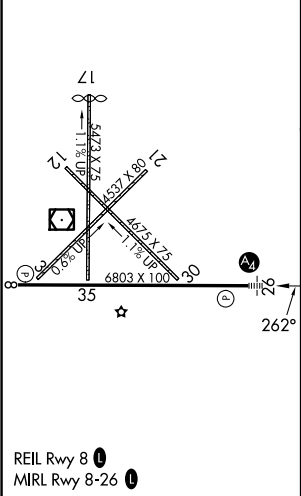
MALS  
=

MISSED APPROACH: Climb to 5900 then climbing left turn to 10000 on heading 190° and SVC VOR/DME R-193 to KUNRE INT/SVC VOR/DME 24.1 DME and hold.

AWOS-3 <b>126.725</b>	ALBUQUERQUE CENTER <b>134.45 327.15</b>	UNICOM <b>122.8 (CTAF) 0</b>
--------------------------	--	---------------------------------



ELEV 5446	TDZE 5380
-----------	-----------



5900	10000	SVC R-193	KUNRE	VIDLE I-SVC 6.8	Remain within 10 NM
↑	hdg 190°				
Use I-SVC DME when on the localizer course.					
I-SVC 1.2	I-SVC 3.3	I-SVC 9	7200	7600	8900
2.1 NM 3.5 NM 2.2 NM					
CATEGORY	A	B	C	D	
S-26	6100-¾ 720 (700-¾)		6100-1¾ 720 (700-1¾)		
CIRCLING	6100-1 654 (700-1)		6100-2 654 (700-2)	6740-3 1294 (1300-3)	

SW-1, 10 JUL 2025 to 07 AUG 2025

SW-1, 10 JUL 2025 to 07 AUG 2025