

|             |         |          |      |
|-------------|---------|----------|------|
| VOR/DME VEL | APP CRS | Rwy Idg  | 7000 |
| 114.15      | 329°    | TDZE     | 5274 |
| Chan 88 (Y) |         | Apt Elev | 5274 |

VOR RWY 35

VERNAL RGNL (VEL)

⚠

⚠

❄

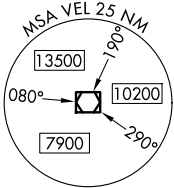
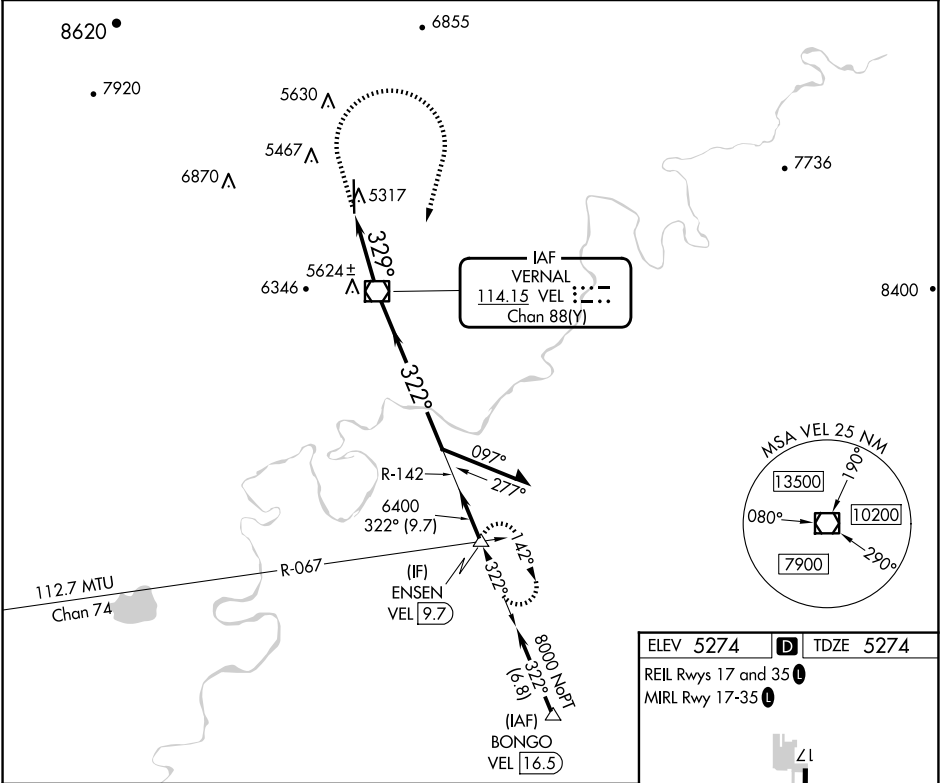
Circling NA west of Rwy 17-35.

Rwy 35 helicopter visibility reduction below ¾ NA.

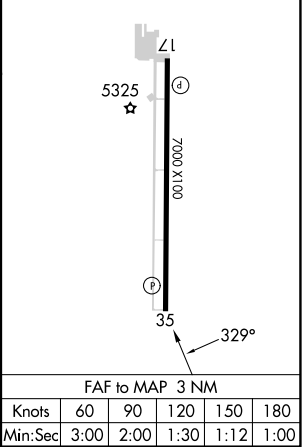
-26°C

MISSED APPROACH: Climb to 6200 then climbing right turn to 8000 direct VEL VOR/DME and on VEL VOR/DME R-142 to ENSEN INT/9.7 DME and hold.

|         |                  |                |
|---------|------------------|----------------|
| ASOS    | SALT LAKE CENTER | UNICOM         |
| 118.125 | 119.95 377.15    | 122.7 (CTAF) 0 |



|                    |           |
|--------------------|-----------|
| ELEV 5274          | TDZE 5274 |
| REIL Rwy 17 and 35 |           |
| MIRL Rwy 17-35     |           |



| 6200   | 8000    | VEL          | VEL R-142    | ENSEN         | VEL VOR/DME | Remain within 10 NM |
|--|---------|--------------|--------------|---------------|-------------|---------------------|
| ↑  | ↷       | ☐            | △            | △             | 142°        | 8000                |
| VGSI and descent angles not coincident (VGSI Angle 3.00/TCH 48). |         |              |              |               |             |                     |
| VEL 3  |         |              |              |               |             |                     |
| 3.42° TCH 48   |         |              |              |               |             |                     |
| 6400   |         |              |              |               |             |                     |
| 329°   |         |              |              |               |             |                     |
| 3 NM   |         |              |              |               |             |                     |
| CATEGORY   | A       | B            | C            | D             |             |                     |
| S-35   | 6160-1¼ | 886 (900-1¼) | 6160-2½      | 886 (900-2½)  |             |                     |
| CIRCLING   | 6160-1¼ | 886 (900-1¼) | 6160-2¾      | 6400-3        |             |                     |
|  |         |              | 886 (900-2¾) | 1126 (1200-3) |             |                     |

SW-4, 10 JUL 2025 to 07 AUG 2025

SW-4, 10 JUL 2025 to 07 AUG 2025