




24249

RNAV (GPS) Z RWY 35
VERNAL RGNL (VEL)

 Rwy 35 helicopter visibility reduction below $\frac{3}{4}$ SM NA.
 For uncompensated Baro-VNAV systems, procedure NA
 -26°C below -21°C or above 54°C.

MISSED APPROACH: Climb to 7000 then climbing right turn to 10000 direct OHAPE and hold.
***Missed approach requires minimum climb of 290 feet per NM to 8600.**

ASOS 118.125	SALT LAKE CENTER 119.95 377.15	UNICOM 122.7 (CTAF) 0
------------------------	--	---------------------------------

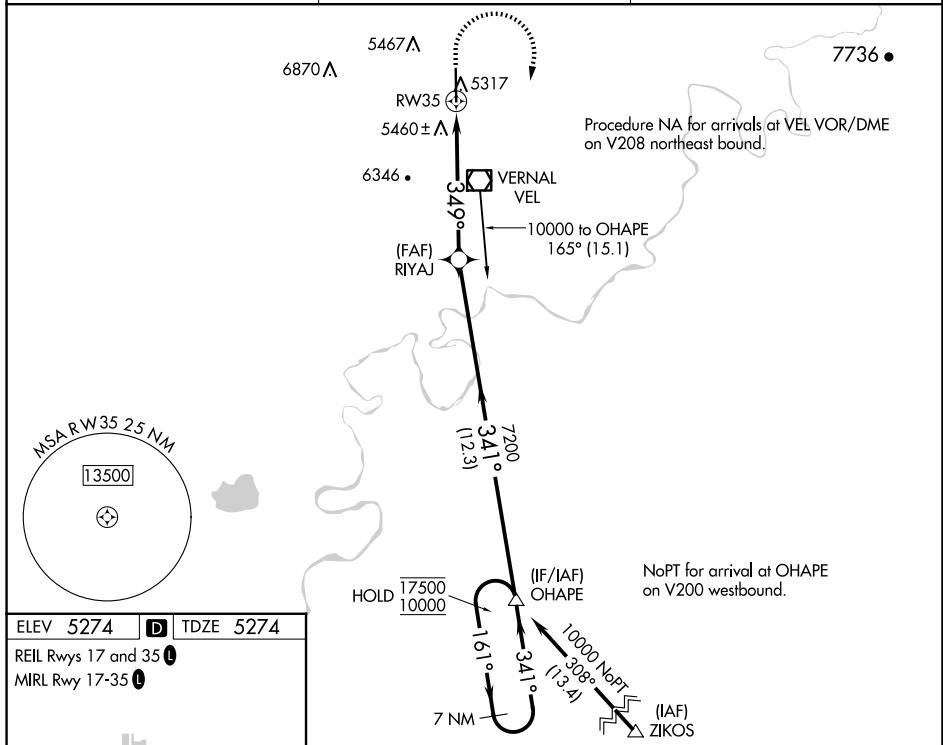


Diagram illustrating a 7 NM Holding Pattern. The pattern is defined by a 7 NM Holding Pattern. The diagram shows the VGS and RNAV glidepath not coincident (VGS Angle 3.00/TCH 48). The diagram includes a table with the following data:

CATEGORY	A	B	C	D
LPV DA*	5610-1	336 (400-1)		
LPV DA	6175-2½	901 (1000-2½)		
INAV/VNAV DA*	5786-1⅜	512 (600-1⅜)		
INAV/VNAV DA	6093-2½	819 (900-2½)		

VERNAL RGNL (VEL)

RNAV (GPS) Z RWY 35

SW-4, 10 JUL 2025 to 07 AUG 2025