

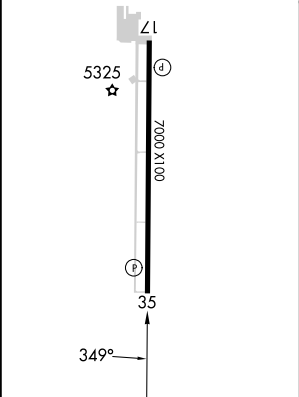
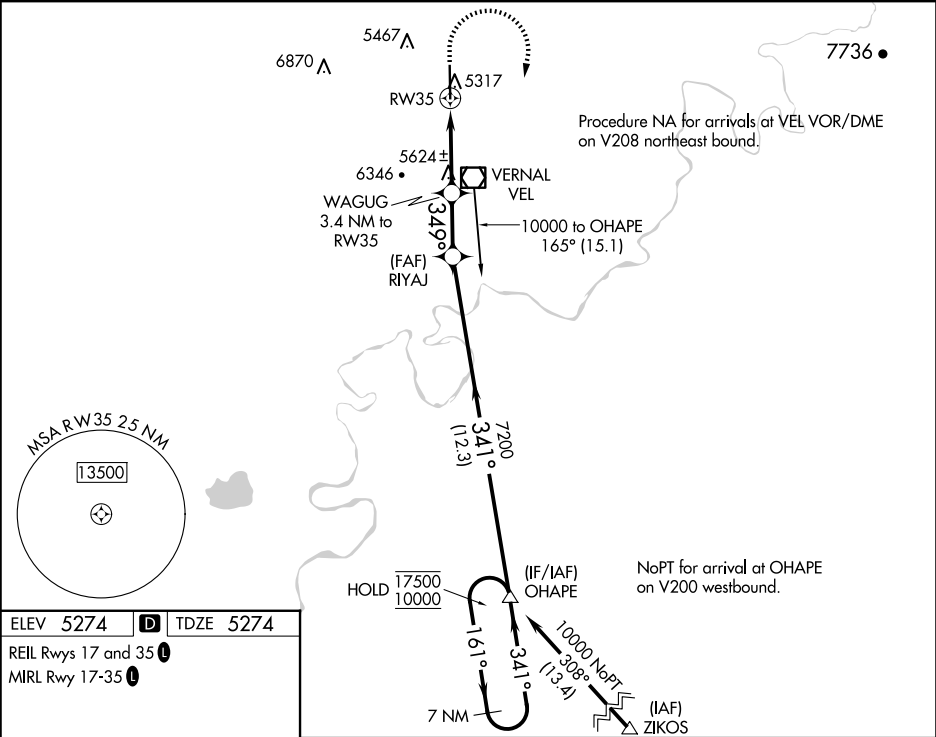
APP CRS	Rwy ldg	7000
349°	TDZE	5274
	Apt Elev	5274

RNAV (GPS) Y RWY 35

VERNAL RGNL (VEL)

RNP APCH.	MISSED APPROACH: Climb to 7000 then climbing right turn to 10000 direct OHAPE and hold. *Missed approach requires minimum climb of 300 feet per NM to 7500.
<div><div><div>▼</div><div>⚠</div><div>❄</div></div><div>Circling NA west of Rwy 17-35. Rwy 35 helicopter visibility reduction below ¾ NA. -26°C</div></div>	

ASOS 118.125	SALT LAKE CENTER 119.95 377.15	UNICOM 122.7 (CTAF) 0
-----------------	-----------------------------------	--------------------------



7000	10000	OHAPE	VGSI and descent angles not coincident (VGSI Angle 3.00/TCH 48).	
WAGUG 3.4 NM to RW35		RIYAJ	OHAPE	7 NM Holding Pattern
RW35 2.1 NM to RW35		WAGUG 3.4 NM to RW35	RIYAJ	OHAPE
2.1 NM		1.3 NM	2.3 NM	12.3 NM
CATEGORY	A	B	C	D
LNAV MDA*	5980-1	706 (800-1)	5980-2	706 (800-2)
LNAV MDA	6380-1¼ 1106 (1200-1¼)	6380-1½ 1106 (1200-1½)	6380-3	1106 (1200-3)
CIRCLING	6380-1¼ 1106 (1200-1¼)	6380-1½ 1106 (1200-1½)	6380-3 1106 (1200-3)	6400-3 1126 (1200-3)