

WAAS CH 78316 W30A	APP CRS 303°	Rwy Idg 6007 TDZE 3169 Apt Elev 3178
--	------------------------	---

RNAV (GPS) RWY 30

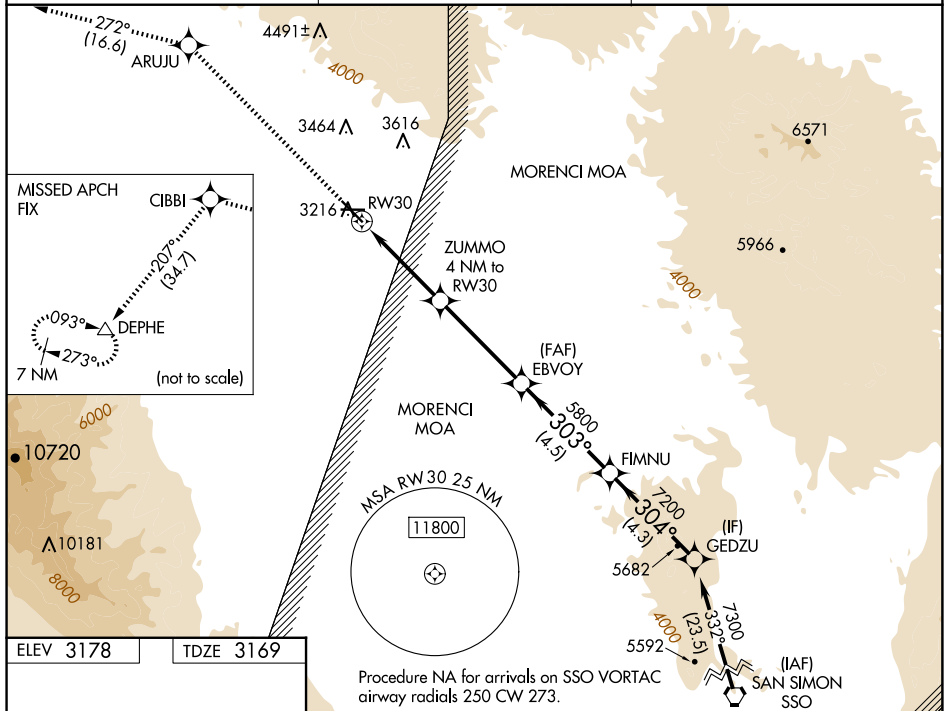
SAFFORD RGNL/1LT DUANE SPALSBURY FLD (SAD)

RNP APCH - GPS.

T Circling to Rwy 8 NA at night. Circling NA northeast of Rwy 12
A and north of Rwy 26. For uncompensated Baro-VNAV systems,
 LNAV/VNAV NA below -6°C or above 54°C.

MISSED APPROACH: Climb to 10000 direct ARUJU and on track 272° to CIBBI and on track 207° to DEPHE and hold.

ASOS 124.175	ALBUQUERQUE CENTER 134.45 327.15	UNICOM 122.8 (CTAF) 0
------------------------	--	---------------------------------



10000	ARUJU	CIBBI	DEPHE	FIMNU	GEDZU
↑	✱	✱	△		
tr 272°	tr 207°				

1.2 NM	2.8 NM	4.1 NM	4.5 NM	4.3 NM
RW30	ZUMMO 4 NM to RW30	EBVOY 5800	FIMNU 7200	GEDZU 7300
		5800		
		4480		
				GP 3.00° TCH 40

CATEGORY	A	B	C	D
LPV DA	3419-3/4	250 (300-3/4)		
LNAV/VNAV DA	3517-1	348 (400-1)		
LNAV MDA	3600-1	431 (500-1)	3600-1 1/4	431 (500-1 1/4)
CIRCLING	3600-1 422 (500-1)	3640-1 462 (500-1)	3640-1 1/2 462 (500-1 1/2)	3900-2 1/4 722 (800-2 1/4)

