

WAAS CH <b>69516</b> <b>W12A</b>	APP CRS <b>123°</b>	Rwy Idg <b>6007</b> TDZE <b>3167</b> Apt Elev <b>3178</b>
--	------------------------	---

## RNAV (GPS) RWY 12

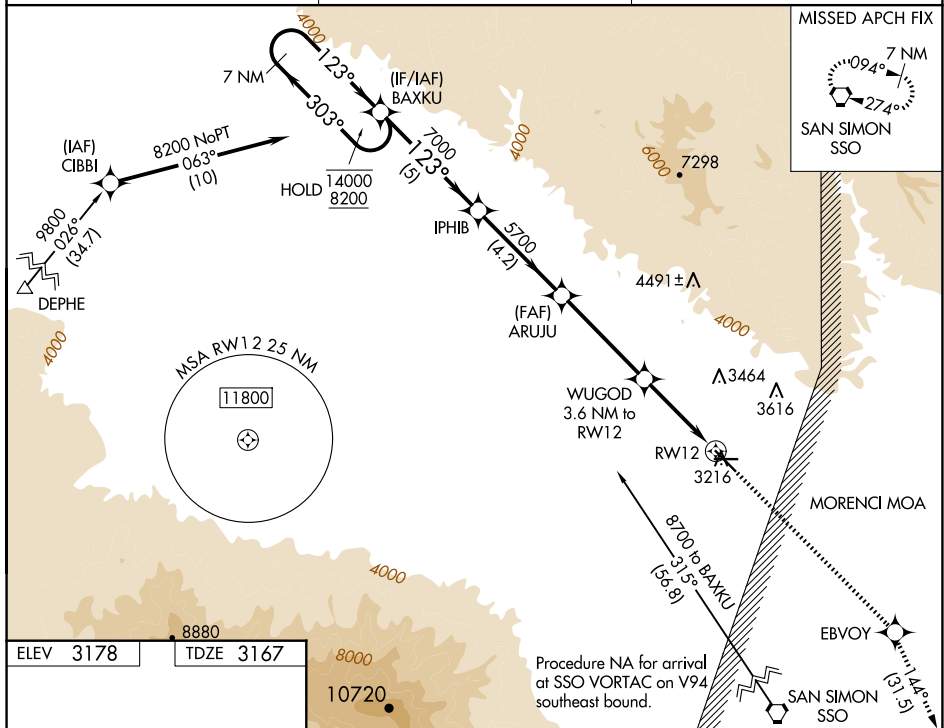
SAFFORD RGNL/1LT DUANE SPALSBURY FLD (SAD)

RNP APCH - GPS.	
-----------------	--

**T** Circling to Rwy 8 NA at night. Circling NA northeast of Rwy 12  
**A** and north of Rwy 26. For uncompensated Baro-VNAV systems,  
LNAV/VNAV NA below -6°C or above 54°C.

**MISSED APPROACH:** Climb to 10000 direct EBVOY and on track 144° to SSO VORTAC and hold.

ASOS <b>124.175</b>	ALBUQUERQUE CENTER <b>134.45 327.15</b>	UNICOM <b>122.8 (CTAF) 0</b>
------------------------	--	---------------------------------



7 NM Holding Pattern 		BAKKU IPHIB ARUJU WUGOD 3.6 NM to RW12 1 NM to RW12	10000 ↑ EBVOY  tr 144° 	SSO 
14000 8200 GP 3.00° TCH 40	303° 123° 123° 7000 5700 4360 5700	5 NM 4.2 NM 4.2 NM 2.7 NM 1 NM	CATEGORY A B C D	LPV DA 3417-3/4 250 (300-3/4) LNAV/VNAV DA 3417-3/4 250 (300-3/4) LNAV MDA 3520-1 353 (400-1) CIRCLING 3580-1 402 (500-1) 3640-1 462 (500-1) 3640-1 1/2 462 (500-1/2) 3900-2 1/4 722 (800-2 1/4)

REIL Rwys 8, 12, 26, and 30 **L**MIRI Rws 8-26 and 12-30 **L**

SAFFORD, ARIZONA

Amdt 1 30NOV23

SAFFORD RGNL/1LT DUANE SPALSBURY FLD (SAD)

32°51'N-109°38'W

RNAV (GPS) RWY 12

SW-4, 10 JUL 2025 to 07 AUG 2025