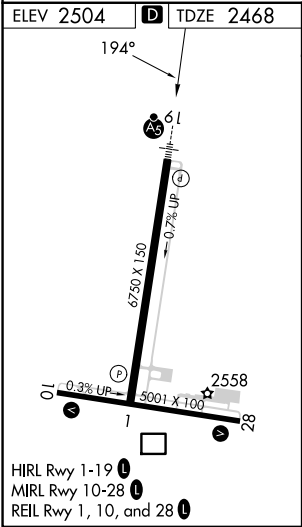
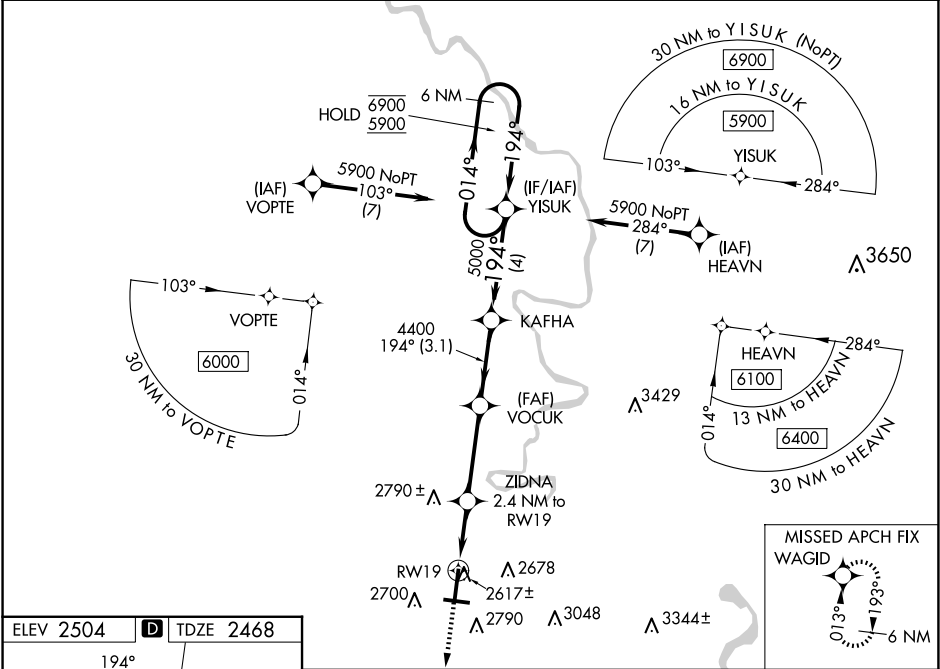


| | | |
|--|------------------------|---|
| WAAS CH 63011 W19A | APP CRS 194° | Rwy Idg TDZE 6750 2468 Apt Elev 2504 |
|--|------------------------|---|

RNAV (GPS) RWY 19
RALEIGH COUNTY MEML (BKW)

| | | | |
|---|--|-------|---|
| RNP APCH - GPS. | | MALSR | MISSED APPROACH: Climb to 5900 direct WAGID and hold, continue climb-in-hold to 5900. |
| <div><div>T</div><div>A</div></div> <div>Baro-VNAV NA. For inop ALS, increase LNAV/VNAV all Cats visibilities to 1 SM, LNAV visibilities Cats C/D to 1½ SM.</div> | <div><div>A5</div><div><div></div><div></div><div></div><div></div><div></div></div></div> | | |
| ASOS 121.55 | CHARLESTON APP CON 125.4 269.125 | | UNICOM 123.0 (CTAF) 0 |



| | | | | | | | |
|---------------|-----------------------|--------|-----------------------|----------------------|-------------------------|---|------------------------|
| 5900 | | WAGID | | 6 NM Holding Pattern | | | |
| | | | | | | | |
| | | RW19 | | GP 3.00° TCH 55 | | | |
| 1.4 NM | | 1.1 NM | | 4 NM | | | |
| CATEGORY | A | | B | | C | D | |
| LPV DA | 2688-½ | | 220 (200- ½) | | | | |
| LNAV/ VNAV | DA | | 2818-⅝ | | 350 (400-⅝) | | |
| LNAV MDA | 2940-½ | | 472 (500-½) | | 2940-1 472 (500-1) | | |
| CIRCLING | 3120-1 616 (700-1) | | 3180-1 676 (700-1) | | 3320-2½ 816 (900-2½) | | 3500-3 996 (1000-3) |

NE-4, 10 JUL 2025 to 07 AUG 2025

NE-4, 10 JUL 2025 to 07 AUG 2025