




LOC I-MQU <u>111.7</u>	APP CRS 193°	Rwy Ldg TDZE Apt Elev	6750 2468 2504
----------------------------------	------------------------	-----------------------------	---

ILS or LOC RWY 19
RALEIGH COUNTY MEML (BKW)

RNP APCH - GPS.		MALSR	MISSED APPROACH: Climb to 3300 then climbing right turn to 5000 direct NUTTR and hold.
 <p>Simultaneous reception of I-MQU and BKW DME required.</p>			
ASOS 121.55	CHARLESTON APP CON 125.4 269.125		UNICOM 123.0 (CTAF) 

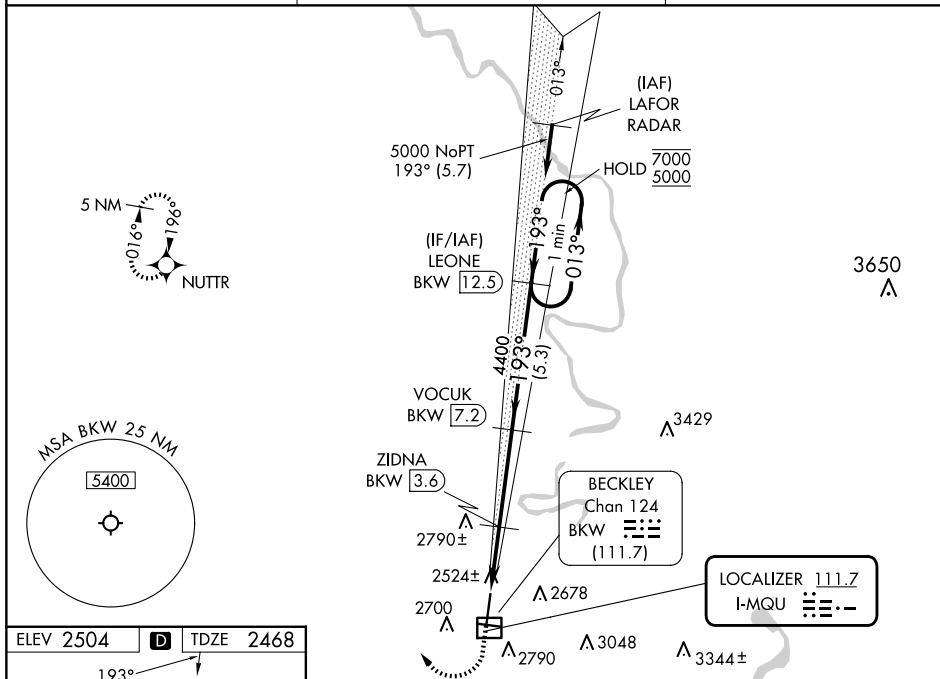


Diagram illustrating the FAF to MAP 6 NM approach for Runway 28. The approach path is shown with a 6.750 x 150 segment and a 3.001 x 100 segment. The climb gradient is 0.7% UP for the first segment and 0.3% UP for the second segment. The diagram also shows the HIRL Rwy 1-19, MIRL Rwy 10-28, and REIL Rws 1, 10, and 28.

FAF to MAP 6 NM					
Knots	60	90	120	150	180
Min:Sec	6:00	4:00	3:00	2:24	2:00

