

VOR/DME BLF

115.05

APP CRS

225°

Rwy Idg

4743

TDZE

2857

Chan 97 (Y)

Apt Elev

2857

VOR RWY 23

MERCER COUNTY (BLF)

DME required.

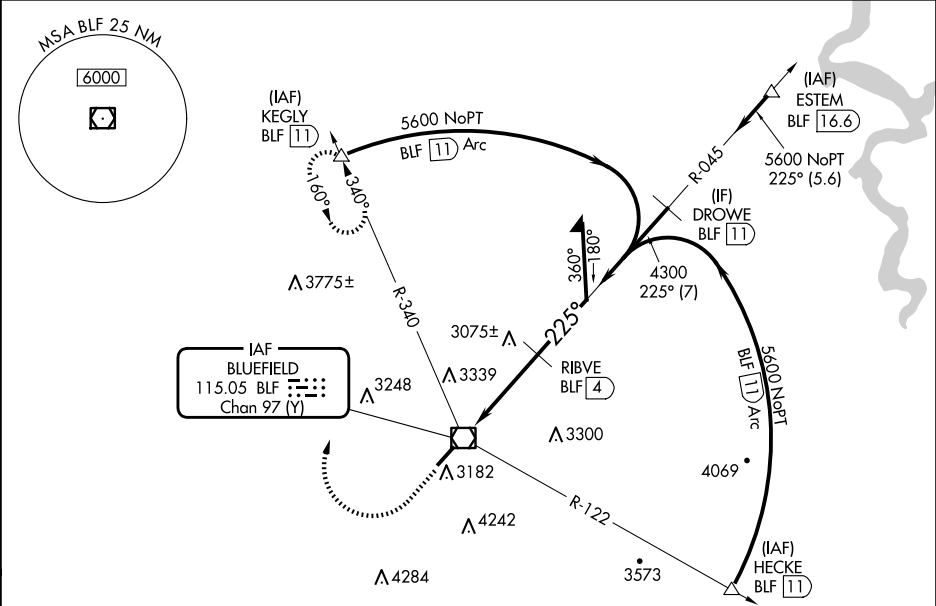
▼

⚠

When local altimeter setting not received, use BKW altimeter setting and increase all MDAs 460 feet; increase S-23 all visibilities 1 ¼ SM and Circling visibility Cat A/B/C ¾ SM. VDP NA when using Beckley altimeter setting. Circling NA southeast of Rwy 5-23.

MISSED APPROACH: Climb to 3800 then climbing right turn to 6000 on heading 020° and BLF R-340 to KEGLY/BLF 11 DME and hold.

ASOS	INDIANAPOLIS CENTER	CTAF
132.725	126.575 257.85	122.9 0



ELEV 2857 D TDZE 2857

3800

6000

↑

hdg 020°

BLF R-340

KEGLY

△

VGSI and descent angles not coincident (VGSI Angle 3.00/TCH 65).

BLF VOR/DME

5600

045°

5100

225°

4300

2.91°

TCH 55

0.5 1.2 2.8 NM

Remain within 10 NM

CATEGORY	A	B	C	D
S-23	3440-1	583 (600-1)	3440-1 ¾	583 (600-1 ¾)
CIRCLING	3440-1 583 (600-1)	3460-1 603 (700-1)	3640-2 ¼ 783 (800-2 ¼)	3780-3 923 (1000-3)

4743 X 100

2913

225°

5

2

HIRL Rwy 5-23 0
REIL Rwys 5 and 23 0