

WAAS
CH **50207**
W23A

APP CRS
229°

Rwy Idg **4743**
TDZE **2856**
Apt Elev **2857**

RNAV (GPS) RWY 23

MERCER COUNTY (BLF)

RNP APCH.

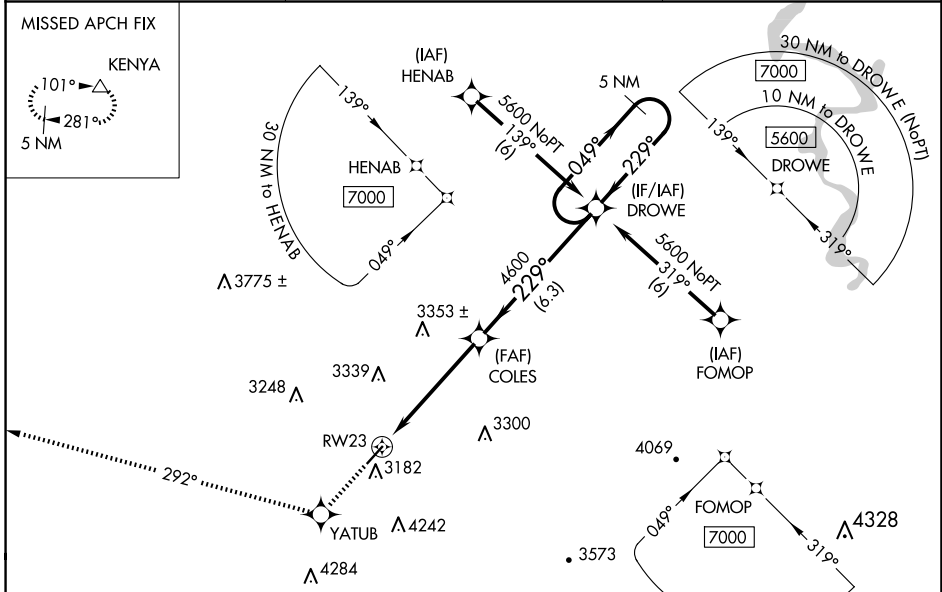
▽

⚠

VDP NA when using Beckley altimeter setting. When local altimeter setting not received, use Beckley altimeter setting and increase all DA 443 feet and all MDA 460 feet; increase LPV all Cats visibility to 2½ miles, LNAV Cat A visibility to 1¼ miles, Cat B to 1½ miles and Cat C and D to 3 miles.

MISSED APPROACH: Climb to 6000 direct YATUB and via track 292° to KENYA and hold.

ASOS 132.725	INDIANAPOLIS CENTER 126.575 257.85	CTAF 122.9 0
------------------------	--	------------------------



ELEV 2857

D

TDZE 2856

229°

47.43 x 100

2913

HIRL Rwy 5-23 0
REIL Rwy 5 and 23 0

6000

YATUB

tr 292°

KENYA

VGSI and RNAV glidepath not coincident (VGSI Angle 3.00/TCH 65).

*LNAV only

COLES

DROWE

5 NM Holding Pattern

2.3 NM to RW23

2.9 NM

6.3 NM

GP 3.00°

TCH 58

CATEGORY	A	B	C	D
LPV DA	3156-1 300 (300-1)			
LNAV MDA	3640-1 784 (800-1)	3640-1¼ 784 (800-1¼)	3640-2¼ 784 (800-2¼)	3640-2½ 784 (800-2½)