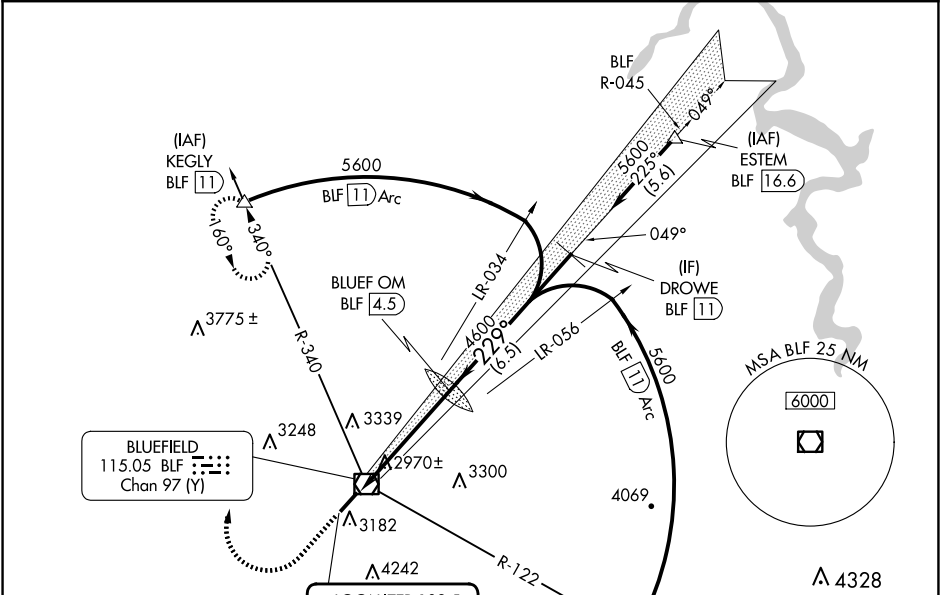


LOC I-BLF 109.5	APP CRS 229°	Rwy Idg 4743 TDZE 2857 Apt Elev 2857
---------------------------	------------------------	---

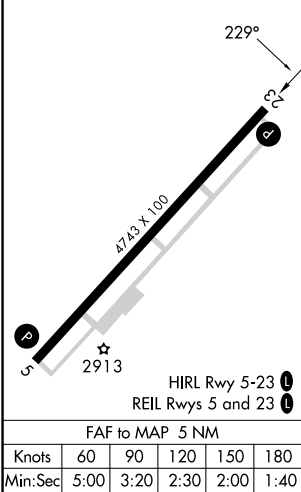
ILS or LOC RWY 23

MERCER COUNTY (BLF)

DME required.		MISSED APPROACH: Climb to 3800 then climbing right turn to 6000 on heading 020° and BLF VOR/DME R-340 to KEGLY/BLF 11 DME and hold.
ASOS 132.725	INDIANAPOLIS CENTER 126.575 257.85	CTAF 122.9 0



ELEV 2857	D	TDZE 2857
-----------	---	-----------



LOCALIZER 109.5 I-BLF		3800	6000	BLF	KEGLY	BLUEF OM	DROWE
		↑	hdg 020°	R-340	△	BLF 4.5	BLF 11
VGSi and ILS glidepath not coincident (VGSi Angle 3.00/TCH 65).							
		4524	4600	5600	GS 3.00° TCH 58		
		5 NM		6.5 NM			
CATEGORY	A	B	C	D			
S-ILS 23	3157-1			300 (300-1)			
S-LOC 23	3520-1	663 (700-1)	3520-1 7/8 663 (700-1 7/8)	3520-2 663 (700-2)			
CIRCLING	3520-1	663 (700-1)	3640-2 1/4 783 (800-2 1/4)	3780-3 923 (1000-3)			