

APP CRS
264°

Rwy Idg
TDZE
Apt Elev

5286
533
545

RNAV (GPS) RWY 26

LACONIA MUNI (LCI)

RNP APCH - GPS.

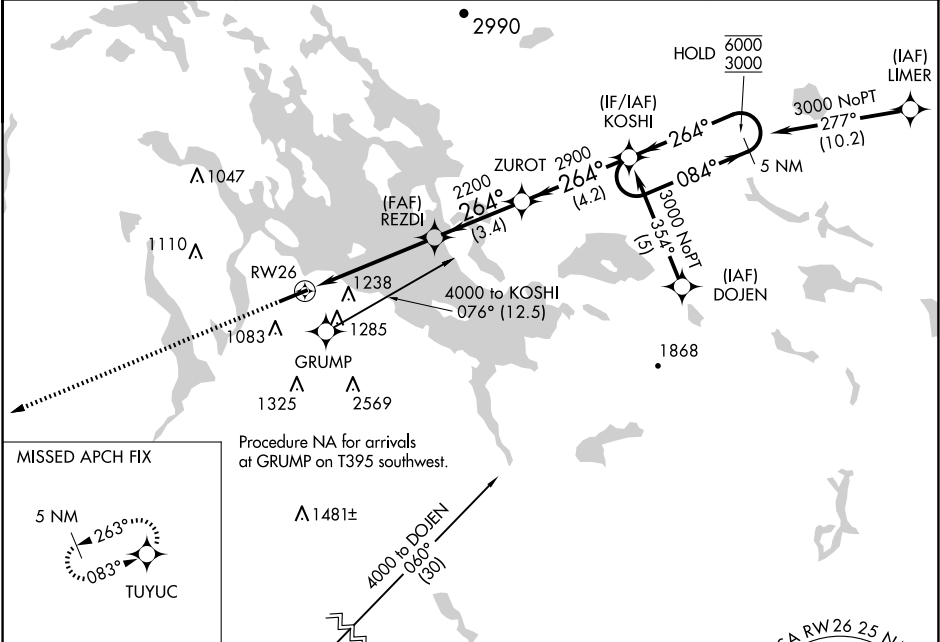
▼

⚠

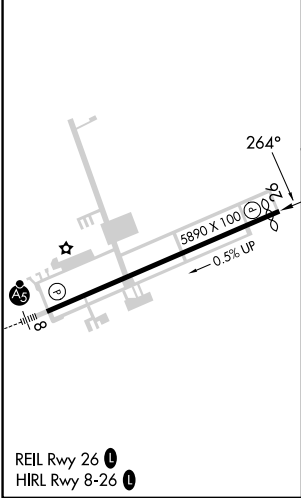
Circling NA south of Rwy 8-26. Rwy 26 helicopter visibility reduction below 1 SM NA. When local altimeter setting not received, use CON altimeter setting and increase all MDAs 80 feet. Straight-in Rwy 26 NA at night, Circling Rwy 26 NA at night.

MISSED APPROACH: Climb to 4400 direct TUYUC and hold, continue climb-in-hold to 4400.

AWOS-3PT 133.525	BOSTON APP CON 134.75 254.25	CLNC DEL 119.85	UNICOM 123.0 (CTAF) 0
---------------------	---------------------------------	--------------------	--------------------------



ELEV 545	TDZE 533
----------	----------



CONCORD CON

Procedure NA for arrivals on CON VOR/DME airway radials 036 CW 087.

MSA RW26 2.5 NM

5600

<div>4400 ↑</div>		<div>TUYUC ✦</div>	Visual Segment - Obstacles.		<div>KOSHI 5 NM Holding Pattern</div>
<div>RW26</div>		<div>REZDI</div>	<div>ZUROT</div>	<div>084° → 6000 ← 264° 3000</div>	
<div>5 NM</div>		<div>3.4 NM</div>	<div>4.2 NM</div>		
CATEGORY	A		B	C	D
LNAV MDA	1420-1¼ 887 (900-1¼)		1420-2½ 887 (900-2½)		
CIRCLING	1420-1¼ 875 (900-1¼)		1420-1½ 875 (900-1½)	1420-3 875 (900-3)	1460-3 915 (1000-3)