

LOC/DME	I-LCI	APP CRS	Rwy Idg	5646
108.5		084°	TDZE	545
Chan 22			Apt Elev	545

ILS or LOC RWY 8

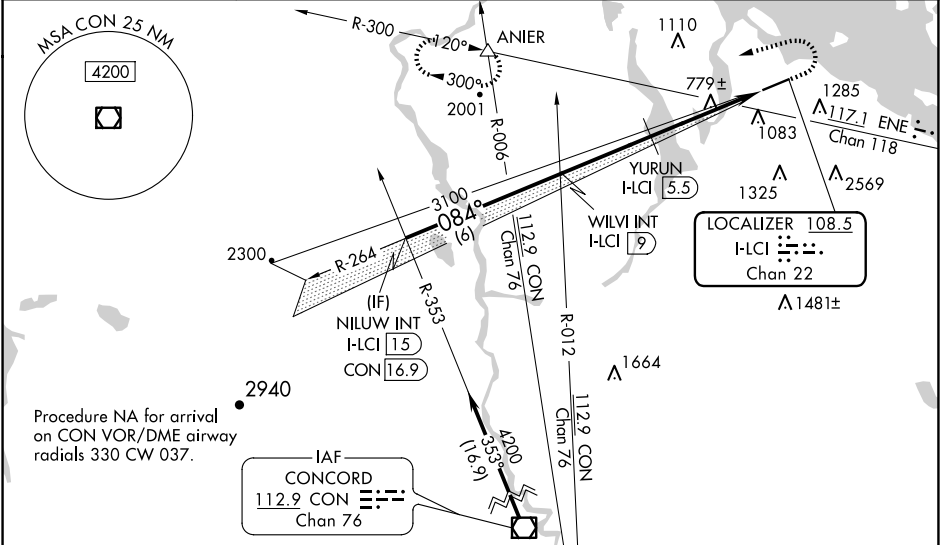
LACONIA MUNI (LCI)

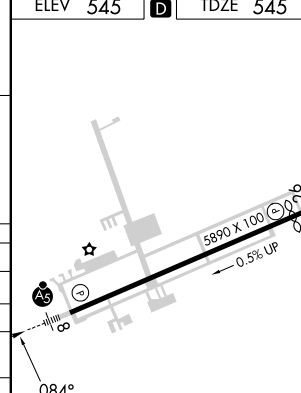
⚠ Circling NA south of Rwy 8-26. Circling Rwy 26 NA at night. For inop ALS, increase S-ILS 8 visibility all Cats 1/8 SM, YURUN fix minimums increase S-LOC 8 Cats C and D visibility 1/4 SM. When local altimeter setting not received, use Concord altimeter setting and increase S-ILS * DA to 876 feet; increase S-ILS 8 DA to 983 feet and all visibilities 1/8 SM and increase all MDAs 100 feet, increase S-LOC 8 visibility Cat A 1/2 SM. Increase YURUN fix minimums visibility Cats C/D 1/4 SM and Circling visibility Cat C 1/4 SM. Inop table does not apply to S-LOC 8 Cats C and D.

MALSR

MISSED APPROACH: Climb to 1150 then climbing left turn to 5000 on heading 264° and ENE VOR/DME R-300 to ANIER INT and hold, continue climb-in-hold to 5000.
*Missed approach requires minimum climb of 295 feet per NM to 1500.

AWOS-3PT	BOSTON APP CON	CLNC DEL	UNICOM
133.525	134.75 254.25	119.85	123.0 (CTAF) 0



NILUW INT I-LCI 15				1150 ↑		5000 hdg 264°		ANIER ENE R-300 △		ELEV 545		D		TDZE 545			
WILVI INT I-LCI 9				YURUN I-LCI 5.5		I-LCI 2.5		I-LCI 1.1									
4200 084°				3100		1980											
GS 3.00° TCH 44				6 NM		3.5 NM		3 NM								1.4 NM	
CATEGORY				A		B		C								D	
S-ILS 8 *		795-½				250 (300-½)											
S-ILS 8		902-⅝				357 (400-⅝)											
S-LOC 8		1980-¾ 1435 (1500-¾)		1980-1 1435 (1500-1)		1980-3		1435 (1500-3)									
CIRCLING		1980-1¼ 1435 (1500-1¼)		1980-1½ 1435 (1500-1½)		1980-3		1435 (1500-3)									
YURUN FIX MINIMUMS																	
S-LOC 8		1040-½		495 (500-½)		1040-1		495 (500-1)									
CIRCLING		1160-1		615 (700-1)		1160-1¾ 615 (700-1¾)		1460-3 915 (1000-3)									
FAF to MAP 7.9 NM																	
Knots		60		90		120		150		180							
Min:Sec		7:54		5:16		3:57		3:10		2:38							