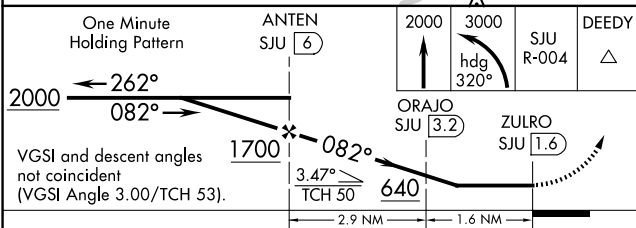
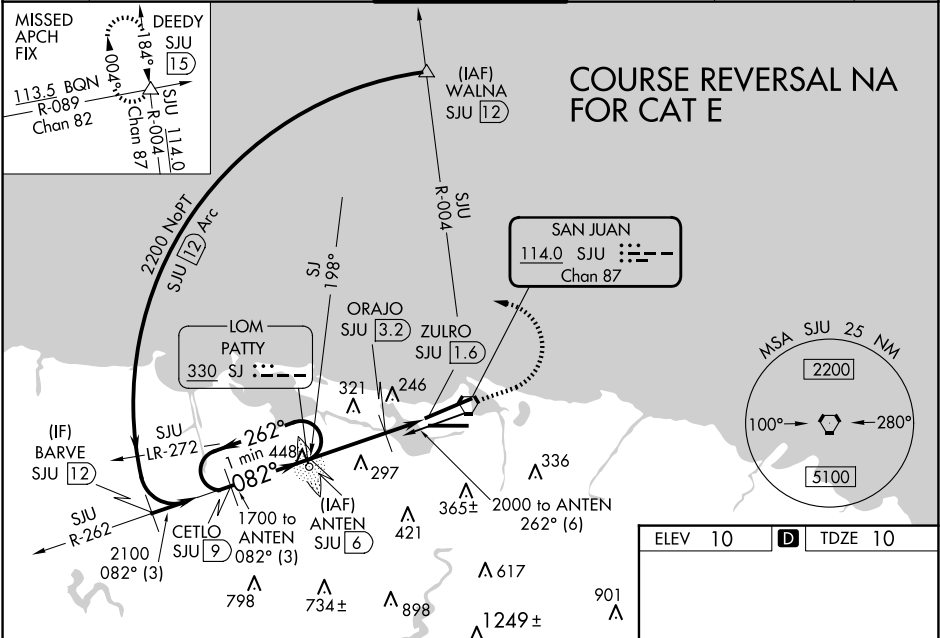


VORTAC SJU	APP CRS	Rwy Ldg	8016
114.0	082°	TDZE	10
Chan 87		Apt Elev	10

VOR or TACAN RWY 10  
LUIS MUNOZ MARIN INTL (SJU)(TJSJ)

ADF or DME required.		
<p>▼ Straight-in Rwy 10 NA at night, operational VGSI required, remain on or above VGSI glidepath until threshold. Circling NA for Cat E south of Rwy 10-28. Inop table does not apply to S-10 Cats A, B and ORAJO fix minimums S-10 Cats A, B. For inop ALS, increase S-10 Cats C/D/E visibility to 1½ SM; increase ORAJO fix minimums S-10 Cats C/D/E visibility to 1½ SM. Rwy 10 helicopter visibility reduction below 1 SM NA.</p>	MALSR 	MISSED APPROACH: Climb to 2000 then climbing left turn to 3000 on heading 320° and SJU VORTAC R-004 to DEEDY INT/1.5 DME and hold.

D-ATIS	SAN JUAN APP CON	SAN JUAN TOWER	GND CON	CLNC DEL	CPDLC
125.8	119.4 269.2 (WEST & SW) 120.9 290.2 (NORTH & EAST)	132.05 257.8	121.9 348.6	126.4 284.6	



ELEV 10	D	TDZE 10
REIL Rwy 26 HIRL Rwy 8-26 and 10-28		
FAF to MAP 4.5 NM		
Knots	60	90 120 150 180
Min:Seq	4:30	3:00 2:15 1:48 1:30

CATEGORY	A	B	C	D	E
S-10	640-1	630 (700-1)	640-1 3/8	630 (700-1 3/8)	
CIRCLING	640-1	630 (700-1)	740-2 730 (800-2)	920-3	910 (1000-3)
ORAJO FIX MINIMUMS (DME REQUIRED)					
S-10	500-1 490 (500-1)				
CIRCLING	600-1	590 (600-1)	740-2 730 (800-2)	920-3	910 (1000-3)

SE-3, 10 JUL 2025 to 07 AUG 2025

SE-3, 10 JUL 2025 to 07 AUG 2025