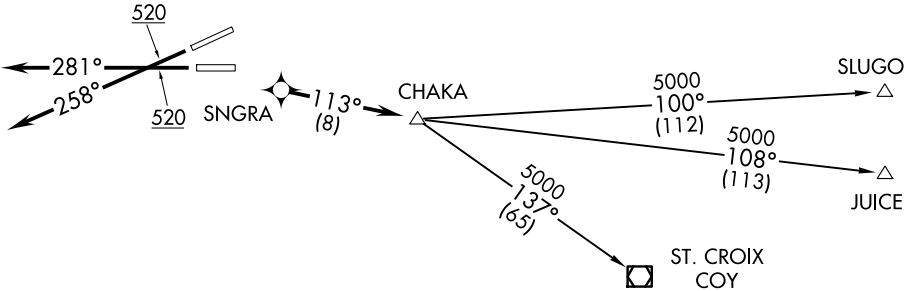


D-ATIS 125.8  
CLNC DEL  
126.4 284.6  
CPDLC  
SAN JUAN TOWER  
132.05 257.8  
GND CON  
121.9 348.6  
SAN JUAN DEP CON  
119.4 269.2 (West & SW)  
120.9 290.2 (North & East)

TOP ALTITUDE:  
5000



TAKE-OFF MINIMUMS

- Rwy 8, 10: NA-ATC.  
Rwy 26: Standard with minimum obstacle climb of 311' per NM to 4800.  
          ATC climb of 350' per NM to 5000.  
Rwy 28: Standard with minimum obstacle climb of 323' per NM to 4800.  
          ATC climb of 350' per NM to 5000.

NOTE: GPS required.  
NOTE: For Prop and Turboprop aircraft only.  
NOTE: RNAV 1.  
NOTE: RADAR required.

NOTE: Chart not to scale.



DEPARTURE ROUTE DESCRIPTION

TAKEOFF RUNWAY 26: Climb heading 258° to 520, continue climb expect vectors to SNGRA, then via 113° track to CHAKA. Thence. . .

TAKEOFF RUNWAY 28: Climb heading 281° to 520, continue climb expect vectors to SNGRA, then via 113° track to CHAKA. Thence. . .

. . . . via assigned transition. Maintain 5000 unless assigned lower altitude. Expect clearance to FL280, or requested altitude if lower, ten minutes after departure.

- JUICE TRANSITION (SNGRA2.JUICE)  
SLUGO TRANSITION (SNGRA2.SLUGO)  
ST. CROIX TRANSITION (SNGRA2.COY)