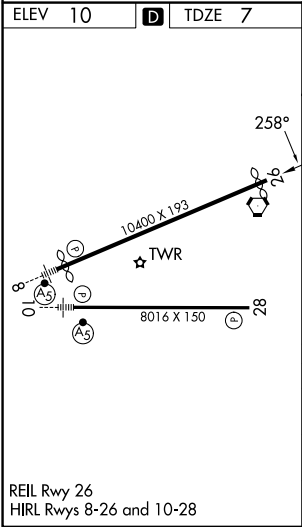
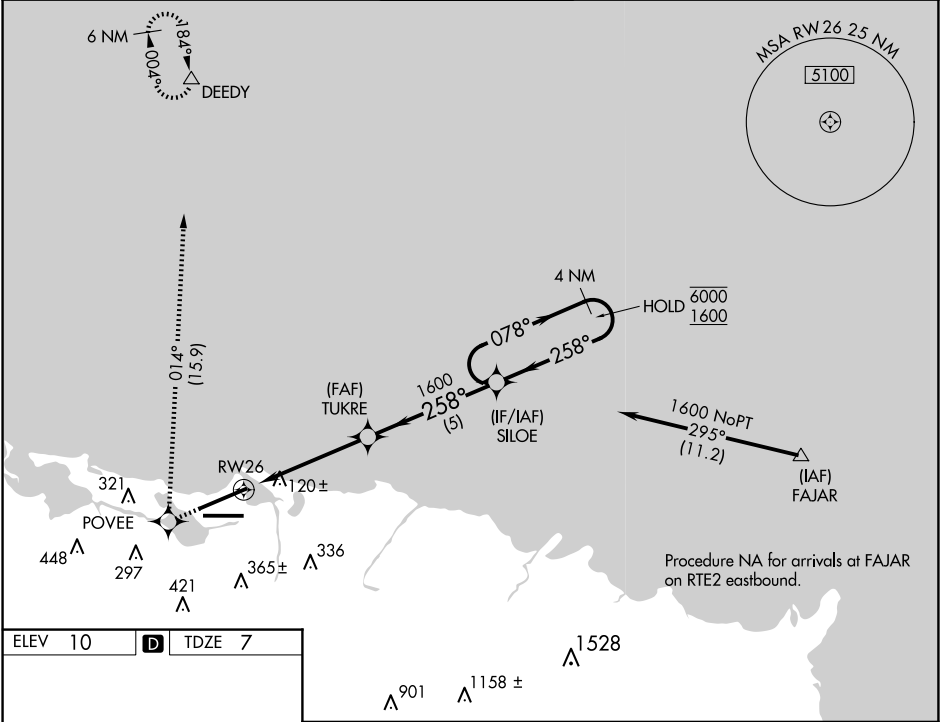


APP CRS	Rwy Ldg	9908
258°	TDZE	7
	Apt Elev	10

RNAV (GPS) RWY 26  
LUIS MUNOZ MARIN INTL (SJU)(TJSJ)

RNP APCH.		MISSED APPROACH: Climb to 3000 direct POVEE and right turn on track 014° direct DEEDY and hold.		
▼ For uncompensated Baro-VNAV systems, LNAV/VNAV ▲ NA below 22°C or above 54°C.				
D-ATIS	SAN JUAN APP CON	SAN JUAN TOWER	GND CON	CLNC DEL
125.8	119.4 269.2 (WEST & SW) 120.9 290.2 (NORTH & EAST)	132.05 257.8	121.9 348.6	126.4 284.6
				CPDLC



3000 POVEE		DEEDY	4 NM Holding Pattern	
*LNAV only		TUKRE 1600	SILOE	
*1.1 NM to RWY 26		258°	078° → 6000 ← 258° 1600 GP 3.00° TCH 55	
1.1 NM		3.7 NM	5 NM	
CATEGORY	A	B	C	D
LNAV/VNAV DA	384-1¼ 377 (400-1¼)			
LNAV MDA	400-1	393 (400-1)	400-1¼ 393 (400-1¼)	400-1¼ 393 (400-1¼)
CIRCLING	600-1	590 (600-1)	740-2 730 (800-2)	920-3 910 (1000-3)

SE-3, 10 JUL 2025 to 07 AUG 2025

SE-3, 10 JUL 2025 to 07 AUG 2025