

APP CRS	Rwy Ldg	8016
101°	TDZE	10
	Apt Elev	10

RNAV (GPS) RWY 10

LUIS MUNOZ MARIN INTL (SJU)(TJSJ)

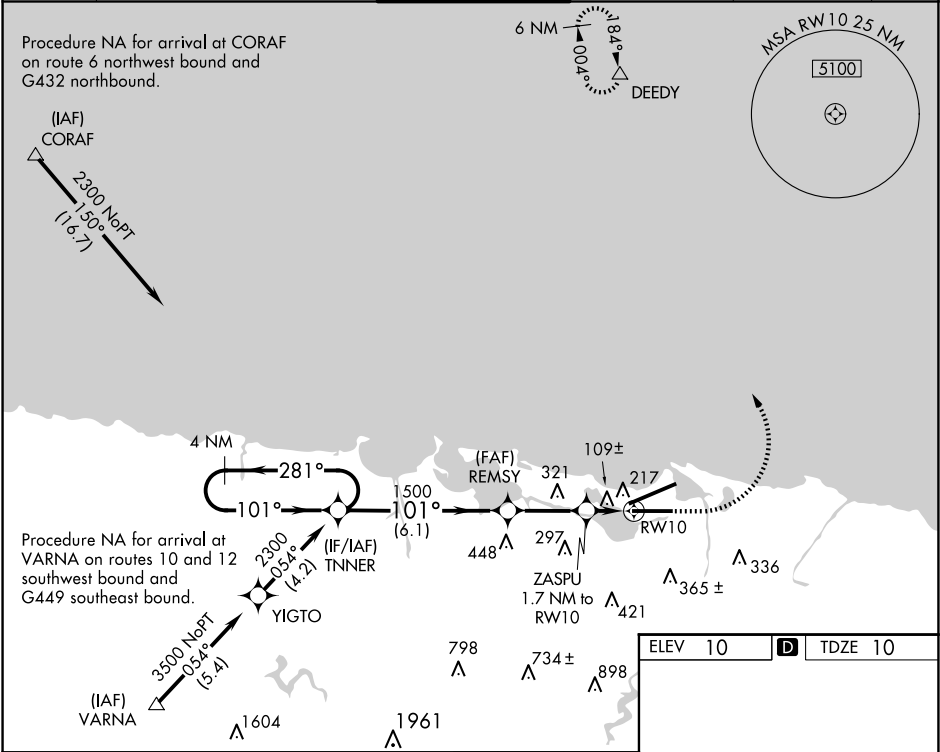
⚠

WAAS VNAV NA. For uncompensated Baro-VNAV systems, LNAV/VNAV NA below -15°C (5°F) or above 54°C (130°F). DME/DME RNP-0.3 NA. For inop MALSR, increase LNAV/VNAV visibility all Cats to 1¼ and increase LNAV Cats C/D visibility to 1⅓.

MALSR

MISSED APPROACH: Climb to 500 then descending left turn to 3000 direct DEEDY and hold.

D-ATIS	SAN JUAN APP CON	SAN JUAN TOWER	GND CON	CLNC DEL	CPDLC
125.8	119.4 269.2 (WEST & SW) 120.9 290.2 (NORTH & EAST)	132.05 257.8	121.9 348.6	126.4 284.6	



4 NM Holding Pattern TNNER

GP 3.00° TCH 52

2300

281°

101°

101°

1500

6.1 NM

2.8 NM

1.7 NM

REMSY

1500

ZASPU 1.7 NM to RW10

RW10

500

3000

DEEDY

* LNAV only

* 600

10400 X 193

TWR

8016 X 150

28

101°

CATEGORY	A	B	C	D
LNAV/ VNAV DA	408-7/8 398 (400-7/8)			
LNAV MDA	480-1/2	470 (500-1/2)	480-1	470 (500-1)
CIRCLING	600-1	590 (600-1)	740-2 730 (800-2)	920-3 910 (1000-3)

REIL Rwy 26

HIRL Rwys 8-26 and 10-28